

ELECTROFUSION FITTINGS CATALOG



STRONGBRIDGE

WWW.STRONGBRIDGE.US

DISTRIBUTED IN CANADA BY:



HDPE.CA

e: HDPESales@hdpe.ca

Table of Contents

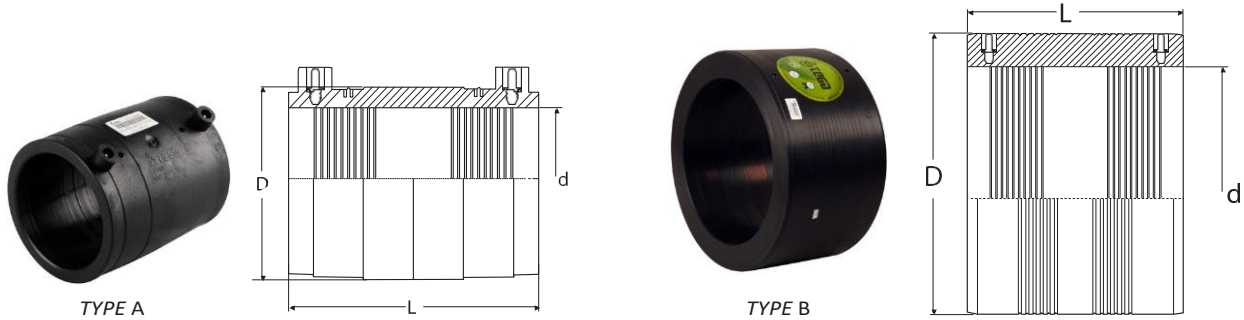
SDR 6 ELECTROFUSION COUPLER IPS.....	1
SDR 7 ELECTROFUSION COUPLER IPS.....	2
SDR 9 ELECTROFUSION COUPLER IPS.....	3
SDR 11 ELECTROFUSION COUPLER IPS.....	4
SDR 17 ELECTROFUSION COUPLER IPS.....	5
SDR 26 ELECTROFUSION COUPLER IPS.....	6
SDR 11 ELECTROFUSION COUPLER DIPS	7
SDR 17 ELECTROFUSION COUPLER DIPS	8
SDR 26 ELECTROFUSION COUPLER DIPS	9
SDR 11 ELECTROFUSION LONG COUPLER IPS.....	10
SDR 11 ELECTROFUSION TAPPING TEES.....	11
SDR 11 ELECTROFUSION SMALL BRANCH SADDLES.....	15
SDR 11 ELECTROFUSION LARGE BRANCH SADDLES.....	21
SDR 17 ELECTROFUSION LARGE BRANCH SADDLES.....	25
SDR 11 BRASS THREADED OUTLET ELECTROFUSION SADDLES.....	28
SDR 11 ELECTROFUSION EQUAL TEES.....	30
SDR 11 ELECTROFUSION REDUCERS.....	31
SDR 11 ELECTROFUSION 45 DEGREE ELBOWS.....	32
SDR 11 ELECTROFUSION 90 DEGREE ELBOWS.....	33
EF FLEX RESTRAINT PE100.....	34

SDR 6 ELECTROFUSION COUPLER IPS

Water - 460 PSI at 73 Deg F Sustainable Maximum Operating Pressure

- Suitable for *WATER*, Fluids & Slurries
- Engineered for PE3408, PE4710&PE100 HDPE Pipe Sytems

Manufactured in accordance with ASTM F-714, ASTM F-1055, ASTM D-2513 ASTM D-3035, ASTM D-3261, ASTM D-3350, AWWA C-901, AWWA C-906, DIN 16963, EN 1555, EN 12201, and ISO-9001 Certified



Nominal IPS Pipe Size	ID (Nominal) d	D	L	Unit Weight in lbs.	Type	Part Number
2"	2.38	3.80	6.65	0.45	A	02-EFC-2200190
3"	3.50	5.60	6.57	1.00	A	02-EFC-2200191
4"	4.50	7.87	7.28	3.00	A	02-EFC-2200192
6"	6.63	10.23	7.56	5.70	A	02-EFC-2200193
8"	8.63	13.38	7.87	10.20	B	02-EFC-2200194
10"	10.75	16.50	8.66	16.90	B	02-EFC-2200160
12"	12.75	19.29	9.06	23.40	B	02-EFC-2200195
14"	14.00	21.65	10.00	33.60	B	02-EFC-2200161
16" (1)	16.00	24.40	11.81	49.60	B	02-EFC-2200196
18" (1)	18.00	27.55	12.60	67.60	B	02-EFC-2200162

(1) Separate fusion zones

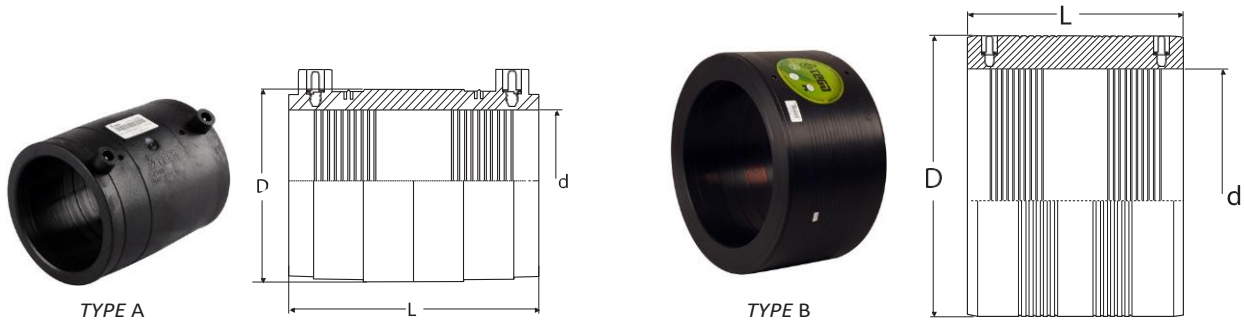
All dimensions are approximated and listed in inches

SDR 7 ELECTROFUSION COUPLER IPS

Water - 360 PSI at 73 Deg F Sustainable Maximum Operating Pressure

- Suitable for *WATER*, Fluids & Slurries
- Engineered for PE3408, PE4710 & PE100 HDPE Pipe Systems

Manufactured in accordance with ASTM F-714, ASTM F-1055, ASTM D-2513, ASTM D-3035, ASTM D-3261, ASTM D-3350, AWWA C-901, AWWA C-906, DIN 16963, EN 1555, EN 12201, and ISO-9001 Certified



Nominal IPS Pipe Size	ID (Nominal) d	D	L	Unit Weight in lbs.	Type	Part Number
2"	2.38	3.82	4.65	1.13	A	02-EFC-2200149
3"	3.50	5.59	6.57	3.40	A	02-EFC-2200150
4"	4.50	6.26	6.77	3.49	A	02-EFC-2200151
6"	6.63	9.45	7.48	9.24	A	02-EFC-2200152
8"	8.63	12.20	7.87	15.98	B	02-EFC-2200153
10"	10.75	15.35	8.66	28.34	B	02-EFC-2200154
12"	12.75	17.32	9.06	33.90	B	02-EFC-2200156 *
14"	14.00	19.29	10.04	48.15	B	02-EFC-2200155 *
16" (1)	16.00	21.77	11.81	70.10	B	02-EFC-2200157 *
18" (1)	18.00	24.41	12.60	93.23	B	02-EFC-2200158 *
20" (1)	20.00	27.17	14.37	132.22	B	02-EFC-2200159 *
22" (1)	22.00	30.71	15.75	196.80	B	02-EFC-2200209

(1) Separate fusion zones
* 350 PSI

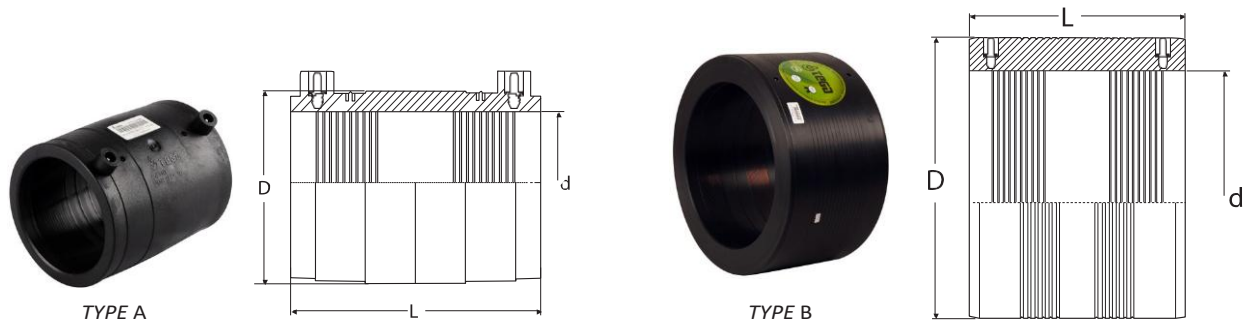
All dimensions are approximated and listed in inches

SDR 9 ELECTROFUSION COUPLER IPS

Water - 300 PSI at 73 Deg F Sustainable Maximum Operating Pressure

- Suitable for *WATER*, Fluids & Slurries
- Engineered for PE3408, PE4710 & PE100 HDPE Pipe Systems

Manufactured in accordance with ASTM F-714, ASTM F-1055, ASTM D-2513, ASTM D-3035, ASTM D-3261, ASTM D-3350, AWWA C-901, AWWA C-906, DIN 16963, EN 1555, EN 12201, and ISO-9001 Certified



Nominal IPS Pipe Size	ID (Nominal) d	D	L	Unit Weight in lbs.	Type	Part Number
2"	2.38	3.82	4.65	1.13	A	02-EFC-2200197
3"	3.50	5.59	6.57	3.40	A	02-EFC-2200198
4"	4.50	6.26	6.69	3.45	A	02-EFC-2200141
6"	6.63	9.06	7.48	7.76	A	02-EFC-2200200
8"	8.63	12.01	7.87	14.96	B	02-EFC-2200143
10"	10.75	14.57	8.66	22.79	B	02-EFC-2200144
12"	12.75	16.73	9.06	28.94	B	02-EFC-2200202
14"	14.00	18.31	10.04	38.03	B	02-EFC-2200145
16" (1)	16.00	20.87	11.81	57.69	B	02-EFC-2200146
18" (1)	18.00	23.62	12.60	80.26	B	02-EFC-2200203
20" (1)	20.00	25.98	14.37	107.66	B	02-EFC-2200204
22" (1)	22.00	29.13	15.75	156.40	B	02-EFC-2200205
24" (1)	24.00	32.68	16.54	221.40	B	02-EFC-2200206

(1) Separate fusion zones

All dimensions are approximated and listed in inches

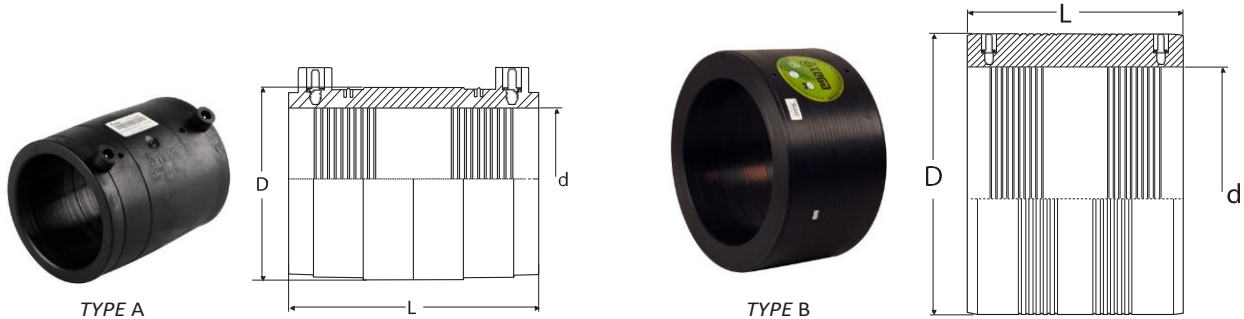
SDR 11 ELECTROFUSION COUPLER IPS DUAL RATED WATER/NATURAL GAS

Water - 200-240 PSI at 73 Deg F Sustainable Maximum Operating Pressure

Gas - 150 PSI at 73 Deg F Sustainable Maximum Operating Pressure

- Suitable for *WATER*, Fluids & Slurries
- Engineered for PE3408, PE4710 & PE100 HDPE Pipe Systems

Manufactured in accordance with ASTM F-714, ASTM F-1055, ASTM D-2513 ASTM D-3035, ASTM D-3261, ASTM D-3350, AWWA C-901, AWWA C-906, DIN 16963, EN 1555, EN 12201, and ISO-9001 Certified



Nominal IPS Pipe Size	ID (Nominal) d	D	L	Unit Weight in lbs.	Type	Part Number
3/4"	1.05	1.61	2.80	0.11	A	02-EFC-2200085
1"	1.32	1.89	3.23	0.16	A	02-EFC-2200087
1 1/4"	1.66	2.17	3.39	0.18	A	02-EFC-2200089
1 1/2"	1.90	2.64	3.86	0.35	A	02-EFC-2200090
2"	2.38	3.15	4.21	0.49	A	02-EFC-2200092
3"	3.50	4.53	5.91	0.89	A	02-EFC-2200266
4"	4.50	5.59	6.69	1.40	A	02-EFC-2200095
5"	5.56	7.09	6.73	3.53	A	02-EFC-2200103
6"	6.63	8.41	7.56	4.75	A	02-EFC-2200185
8"	8.63	10.75	7.87	9.25	A	02-EFC-2200073
10"	10.75	13.39	8.66	14.99	B	02-EFC-2200114 *
12"	12.75	15.35	9.06	18.03	B	02-EFC-2200058
14"	14.00	17.32	10.00	28.34	B	02-EFC-2200119 **
16" (1)	16.00	19.29	11.81	37.35	B	02-EFC-2200060
18" (1)	18.00	21.57	12.60	48.52	B	02-EFC-2200062 **
20" (1)	20.00	24.21	14.41	73.07	B	02-EFC-2200065 **
22" (1)	22.00	27.17	15.75	108.88	B	02-EFC-2200187 **
24" (1)	24.00	29.72	15.75	131.86	B	02-EFC-2200133
26" (1)	26.00	32.28	16.54	164.87	B	02-EFC-2200079
28" (1)	28.00	34.65	17.52	198.58	B	02-EFC-2200188 *
30" (1)	30.00	37.01	17.52	223.98	B	02-EFC-2200137
32" (1)	32.00	38.98	18.50	249.45	B	02-EFC-2200068
34" (1)	34.00	42.13	18.90	318.26	B	02-EFC-2200189 **
36" (1)	36.00	44.09	19.69	347.46	B	02-EFC-2200139
40" (1)	40.00	47.24	19.69	338.71	B	02-EFC-2200070
42" (1)	42.00	51.18	19.69	456.00	B	02-EFC-2200140 **

(1) Separate fusion zones

* 220 PSI

** 200 PSI

All dimensions are approximated and listed in inches

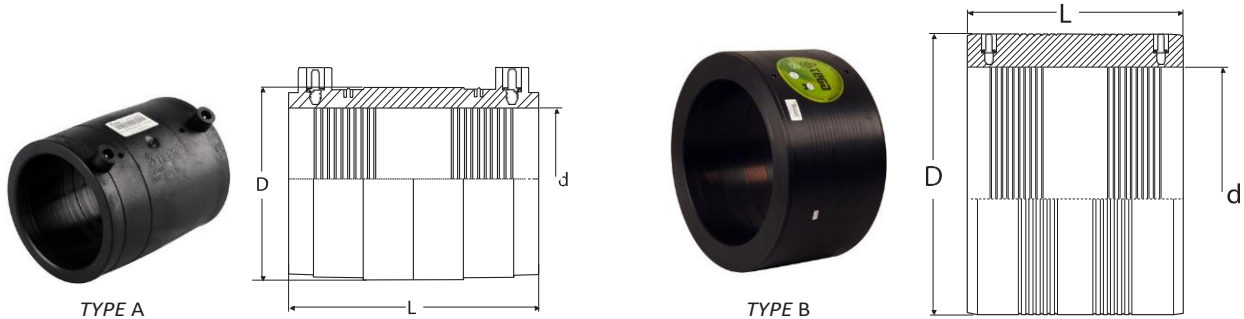
SDR 17 ELECTROFUSION COUPLER IPS DUAL RATED WATER/NATURAL GAS

Water - 160 PSI at 73 Deg F Sustainable Maximum Operating Pressure

Gas - 100 PSI at 73 Deg F Sustainable Maximum Operating Pressure

- Suitable for *WATER*, Fluids & Slurries
- Engineered for PE3408, PE4710 & PE100 HDPE Pipe Systems

Manufactured in accordance with ASTM F-714, ASTM F-1055, ASTM D-2513 ASTM D-3035, ASTM D-3261, ASTM D-3350, AWWA C-906, DIN 16963, EN 1555, EN 12201, and ISO-9001 Certified



Nominal IPS Pipe Size	ID (Nominal) d	D	L	Unit Weight in lbs.	Type	Part Number
6"	6.63	7.76	7.48	3.31	A	02-EFC-2200033
8"	8.63	10.31	8.03	7.00	A	02-EFC-2200034
10"	10.75	12.60	8.66	10.18	A	02-EFC-2200036
12"	12.75	14.96	9.06	15.10	A	02-EFC-2200037
14"	14.00	16.34	10.00	19.32	A	02-EFC-2200038
16" (1)	16.00	18.50	11.81	27.78	A	02-EFC-2200039
18" (1)	18.00	20.87	12.60	38.21	B	02-EFC-2200040
20" (1)	20.00	23.23	14.41	54.75	B	02-EFC-2200041
22" (1)	22.00	25.79	15.75	77.60	B	02-EFC-2200042
24" (1)	24.00	27.95	15.75	88.05	B	02-EFC-2200043
26" (1)	26.00	30.51	16.54	114.78	B	02-EFC-2200044
28" (1)	28.00	33.07	17.52	147.71	B	02-EFC-2200045
30" (1)	30.00	35.43	17.52	169.57	B	02-EFC-2200046
32" (1)	32.00	37.20	18.50	181.46	B	02-EFC-2200047
34" (1)	34.00	40.16	18.90	234.93	B	02-EFC-2200048
36" (1)	36.00	41.73	19.69	238.80	B	02-EFC-2200049
40" (1)	40.00	46.85	19.69	318.86	B	02-EFC-2200184
42" (1)	42.00	49.21	19.69	352.58	B	02-EFC-2200050
48" (1)	48.00	55.12	20.67	413.04	B	02-EFC-2200051
54" (1)	54.00	62.20	21.65	562.07	B	02-EFC-2200052

(1) Separate fusion zones

All dimensions are approximated and listed in inches

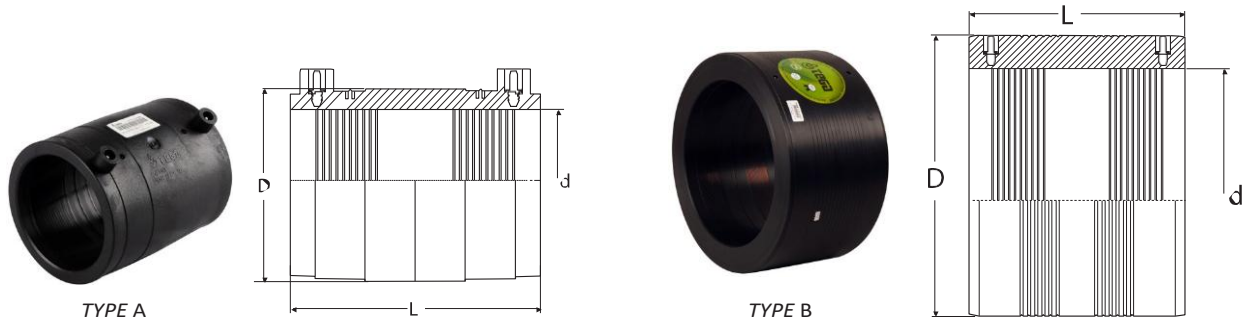
SDR 26 ELECTROFUSION COUPLER IPS DUAL RATED WATER/NATURAL GAS

Water - 100 PSI at 73 Deg F Sustainable Maximum Operating Pressure

Gas - 60 PSI at 73 Deg F Sustainable Maximum Operating Pressure

- Suitable for *WATER*, Fluids & Slurries
- Engineered for PE3408, PE4710 & PE100 HDPE Pipe Systems

Manufactured in accordance with ASTM F-714, ASTM F-1055, ASTM D-2513 ASTM D-3035, ASTM D-3261, ASTM D-3350, AWWA C-901, AWWA C-906, DIN 16963, EN 1555, EN 12201, and ISO-9001 Certified



Nominal IPS Pipe Size	ID (Nominal) d	D	L	Unit Weight in lbs.	Type	Part Number
3"	3.50	4.06	3.94	0.45	A	02-EFC-2200008
4"	4.50	4.92	3.94	0.43	A	02-EFC-2200009
6"	6.63	7.36	6.69	1.88	B	02-EFC-2200010
8"	8.63	9.57	6.69	3.12	B	02-EFC-2200011
10"	10.75	12.01	6.69	5.22	B	02-EFC-2200012
12"	12.75	14.56	7.09	5.90	B	02-EFC-2200013
14"	14.00	15.28	7.09	7.20	B	02-EFC-2200014
16"	16.00	17.64	8.66	12.99	B	02-EFC-2200015
18"	18.00	19.88	9.06	17.57	B	02-EFC-2200016
20"	20.00	22.64	9.06	27.73	B	02-EFC-2200017
22" (1)	22.00	24.21	9.84	27.40	B	02-EFC-2200018
24" (1)	24.00	26.38	13.78	44.94	B	02-EFC-2200019
26" (1)	26.00	28.90	13.78	59.68	B	02-EFC-2200020
28" (1)	28.00	30.71	13.78	59.66	B	02-EFC-2200021
30" (1)	30.00	33.07	13.78	72.66	B	02-EFC-2200022
32" (1)	32.00	35.04	13.78	76.44	B	02-EFC-2200023
34" (1)	34.00	37.40	14.96	98.93	B	02-EFC-2200024
36" (1)	36.00	40.55	14.96	141.98	B	02-EFC-2200025
40" (1)	40.00	44.49	14.96	154.45	B	02-EFC-2200027
42" (1)	42.00	46.46	19.69	211.28	B	02-EFC-2200028
48" (1)	48.00	53.15	19.69	279.16	B	02-EFC-2200030
54" (1)	54.00	59.06	19.69	306.29	B	02-EFC-2200171
63" (1)	63.00	68.50	19.69	387.90	B	02-EFC-2200031

(1) Separate fusion zones

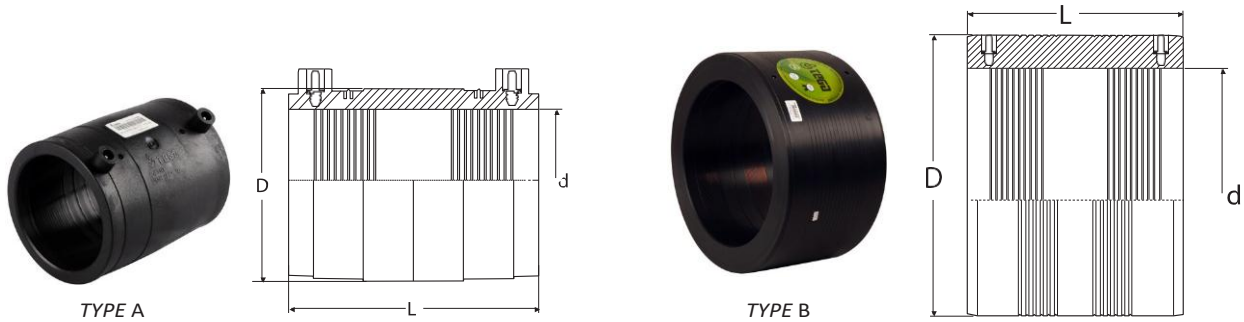
All dimensions are approximated and listed in inches

SDR 11 ELECTROFUSION COUPLER DIPS

Water 200-240 PSI at 73 Deg F Sustainable Maximum Operating Pressure

- Suitable for *WATER*, Fluids & Slurries
- Engineered for PE3408, PE4710 & PE100 HDPE Pipe Systems

Manufactured in accordance with ASTM F-714, ASTM F-1055, ASTM D-2513 ASTM D-3035, ASTM D-3261, ASTM D-3350, AWWA C-906, DIN 16963, EN 1555, EN 12201, and ISO-9001 Certified



Nominal DIPS Pipe Size	ID (Nominal) d	D	L	Unit Weight in lbs.	Type	Part Number
4"	4.80	6.30	6.60	3.00	A	02-EFC-2200229
6"	6.90	8.40	7.50	4.70	A	02-EFC-2200230
8"	9.05	10.60	8.00	6.70	A	02-EFC-2200231 **
10"	11.10	13.00	8.60	13.80	B	02-EFC-2200075 *
12"	13.20	15.35	9.50	24.00	B	02-EFC-2200232
14" (1)	15.30	18.30	11.80	41.50	B	02-EFC-2200076
16" (1)	17.40	20.86	12.60	56.30	B	02-EFC-2200077
18" (1)	19.50	23.20	14.40	68.50	B	02-EFC-2200078 *
20" (1)	21.60	26.50	15.70	115.00	B	02-EFC-2200233
24" (1)	25.80	31.50	16.50	156.50	B	02-EFC-2200234
30" (1)	32.00	38.50	18.50	246.60	B	02-EFC-2200235 **

(1) Separate fusion zones
 * 220 PSI
 ** 200 PSI

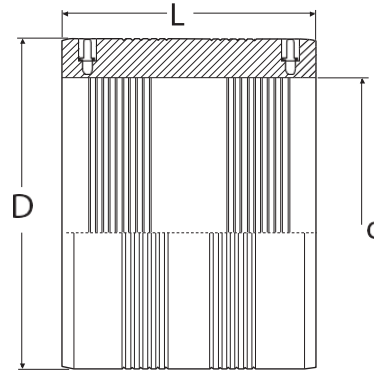
All dimensions are approximated and listed in inches

SDR 17 ELECTROFUSION COUPLER DIPS

Water 160 PSI at 73 Deg F Sustainable Maximum Operating Pressure

- Suitable for *WATER*, Fluids & Slurries
- Engineered for PE3408, PE4710 & PE100 HDPE Pipe Systems

Manufactured in accordance with ASTM F-714, ASTM F-1055, ASTM D-2513 ASTM D-3035, ASTM D-3261, ASTM D-3350, AWWA C-906, DIN 16963, EN 1555, EN 12201, and ISO-9001 Certified



Nominal DIPS Pipe Size	ID (Nominal) d	D	L	Unit Weight in lbs.	Part Number
6"	6.90	8.10	7.50	3.50	02-EFC-2200220
8"	9.05	10.60	7.80	5.70	02-EFC-2200035
10"	11.10	13.00	8.60	10.60	02-EFC-2200221
12"	13.20	15.35	9.50	16.00	02-EFC-2200222
14" (1)	15.30	18.30	11.80	29.80	02-EFC-2200223
16" (1)	17.40	20.86	12.60	45.10	02-EFC-2200224
18" (1)	19.50	23.20	14.40	54.60	02-EFC-2200225
20" (1)	21.60	26.50	15.70	88.50	02-EFC-2200226
24" (1)	25.80	30.50	16.50	112.70	02-EFC-2200227
30" (1)	32.00	37.40	18.50	179.50	02-EFC-2200228

(1) Separate fusion zones

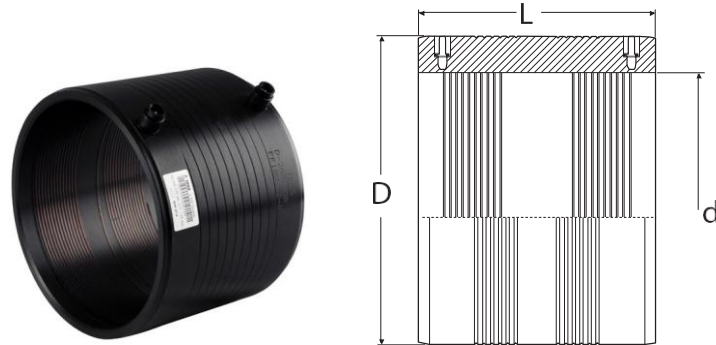
All dimensions are approximated and listed in inches

SDR 26 ELECTROFUSION COUPLER DIPS

Water - 100 PSI at 73 Deg F Sustainable Maximum Operating Pressure

- Suitable for *WATER*, Fluids & Slurries
- Engineered for PE3408, PE4710 & PE100 HDPE Pipe Systems

Manufactured in accordance with ASTM F-714, ASTM F-1055, ASTM D-2513 ASTM D-3035, ASTM D-3261, ASTM D-3350, AWWA C-906, DIN 16963, EN 1555, EN 12201, and ISO-9001 Certified



Nominal DIPS Pipe Size	ID (Nominal) d	D	L	Unit Weight in lbs.	Part Number
4"	4.80	5.30	3.94	0.55	02-EFC-2200210
6"	6.90	7.67	6.30	1.87	02-EFC-2200211
10"	11.10	12.20	6.50	4.50	02-EFC-2200212
12"	13.20	14.75	7.08	8.30	02-EFC-2200213
14"	15.30	17.10	8.66	13.80	02-EFC-2200214
16"	17.40	19.25	8.66	16.20	02-EFC-2200215
18"	19.50	21.50	8.66	20.60	02-EFC-2200216
20"	21.60	24.20	9.84	29.20	02-EFC-2200217
24" (1)	25.80	28.40	12.90	48.20	02-EFC-2200218
30" (1)	32.00	35.40	13.70	75.50	02-EFC-2200219
36" (1)	38.30	42.10	15.00	124.00	02-EFC-2200026

(1) Separate fusion zones

All dimensions are approximated and listed in inches

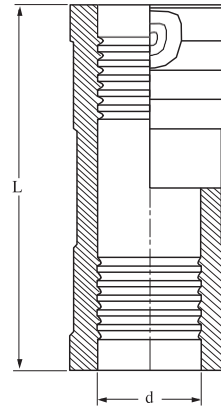
SDR 11 ELECTROFUSION LONG COUPLER IPS DUAL RATED WATER/NATURAL GAS

Water - 240 PSI at 73 Deg F Sustainable Maximum Operating Pressure

Gas - 150 PSI at 73 Deg F Sustainable Maximum Operating Pressure

- Suitable for *WATER*, Fluids & Slurries
- Engineered for PE3408, PE4710 & PE100 HDPE Pipe Systems

Manufactured in accordance with ASTM F-714, ASTM F-1055, ASTM D-2513 ASTM D-3035, ASTM D-3261, ASTM D-3350, AWWA C-901, AWWA C-906, DIN 16963, EN 1555, EN 12201, and ISO-9001 Certified



Nominal Pipe Size (d)	Base Norm	L	Unit Weight in lbs.	Part Number
3/4"	IPS	4.25	1.43	02-EFC-2200236
1"	CTS	5.04	0.26	02-EFC-2200237
1"	IPS	5.04	0.26	02-EFC-2200238
1 1/4"	IPS	6.38	0.33	02-EFC-2200239
1 1/2"	IPS	6.38	0.61	02-EFC-2200240
2"	IPS	7.32	1.13	02-EFC-2200241
3"	IPS	10.04	2.94	02-EFC-2200242
4"	IPS	11.93	5.28	02-EFC-2200243

All dimensions are approximated and listed in inches

SDR 11 ELECTROFUSION TAPPING TEES DUAL RATED WATER/NATURAL GAS

Water - 240 PSI at 73 Deg F Sustainable Maximum Operating Pressure

Gas - 150 PSI at 73 Deg F Sustainable Maximum Operating Pressure

- Suitable for *WATER*, Fluids & Slurries
- Engineered for PE3408, PE4710 & PE100 HDPE Pipe Systems

Manufactured in accordance with ASTM F-714, ASTM F-1055, ASTM D-2513 ASTM D-3035, ASTM D-3261, ASTM D-3350, AWWA C-901, AWWA C-906, DIN 16963, EN 1555, EN 12201, and ISO-9001 Certified



TYPE A



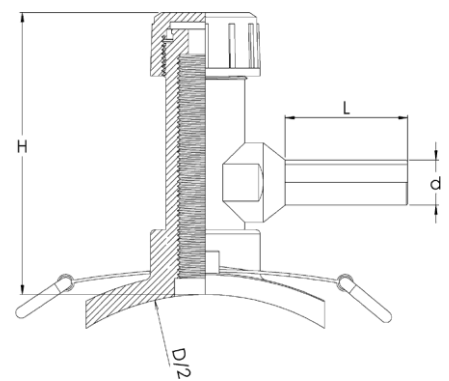
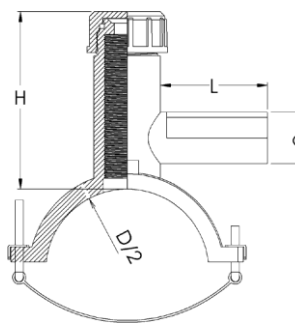
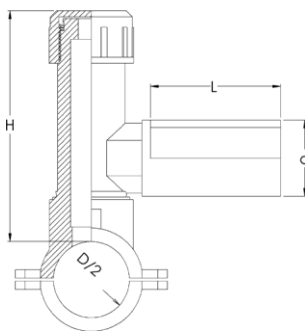
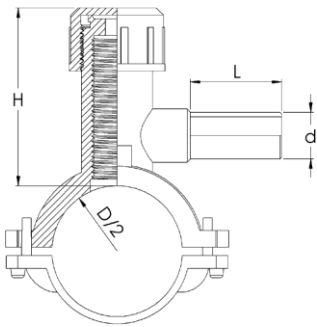
TYPE B



TYPE C



TYPE D



Base (D)	Base Norm	Outlet (d)	Outlet Norm	H	L	Unit Weight in lbs	Type	Part Number
1 1/4"	IPS	1/2"	CTS	4.13	1.73	0.64	A	02-ETT-2202000
1 1/4"	IPS	1/2"	IPS	4.13	1.73	0.66	A	02-ETT-2202068
1 1/4"	IPS	3/4"	CTS	4.13	1.73	0.66	A	02-ETT-2202069
1 1/4"	IPS	3/4"	IPS	4.13	1.73	0.66	A	02-ETT-2202001
1 1/4"	IPS	1"	CTS	4.13	1.73	0.68	A	02-ETT-2202070
1 1/4"	IPS	1"	IPS	4.13	1.85	0.68	A	02-ETT-2202002
1 1/2"	IPS	1/2"	CTS	4.13	2.05	1.06	A	02-ETT-2202071
1 1/2"	IPS	1/2"	IPS	4.13	2.05	1.12	A	02-ETT-2202072
1 1/2"	IPS	3/4"	CTS	4.13	2.05	1.15	A	02-ETT-2202073
1 1/2"	IPS	3/4"	IPS	4.13	2.13	1.26	A	02-ETT-2202074
1 1/2"	IPS	1"	CTS	4.13	2.13	1.28	A	02-ETT-2202004
1 1/2"	IPS	1"	IPS	4.13	3.35	1.30	A	02-ETT-2202005
1 1/2"	IPS	1 1/4"	CTS	4.13	3.35	1.30	A	02-ETT-2202075

All dimensions are approximated and listed in inches

2"	IPS	1/2"	CTS	4.13	2.05	1.19	A	02-ETT-2202006
2"	IPS	1/2"	IPS	4.13	2.05	1.23	A	02-ETT-2202007
2"	IPS	3/4"	CTS	4.13	2.05	1.23	A	02-ETT-2202008

All dimensions are approximated and listed in inches



SDR 11 ELECTROFUSION TAPPING TEES DUAL RATED WATER/NATURAL GAS

Water - 240 PSI at 73 Deg F Sustainable Maximum Operating Pressure

Gas - 150 PSI at 73 Deg F Sustainable Maximum Operating Pressure

- Suitable for *WATER*, Fluids & Slurries
- Engineered for PE3408, PE4710 & PE100 HDPE Pipe Systems

Manufactured in accordance with ASTM F-714, ASTM F-1055, ASTM D-2513, ASTM D-3035, ASTM D-3261, ASTM D-3350, AWWA C-901, AWWA C-906, DIN 16963, EN 1555, EN 12201, and ISO-9001 Certified

Base (D)	Base Norm	Outlet (d)	Outlet Norm	H	L	Unit Weight in lbs	Type	Part Number
2"	IPS	3/4"	IPS	4.13	2.13	1.28	A	02-ETT-2202009
2"	IPS	1"	CTS	4.13	2.13	1.28	A	02-ETT-2202010
2"	IPS	1"	IPS	4.13	3.35	1.30	A	02-ETT-2202011
2"	IPS	1 1/4"	IPS	4.13	3.54	1.30	A	02-ETT-2202012
2"	IPS	1 1/4"	CTS	4.13	3.35	1.30	A	02-ETT-2202076
2"	IPS	1 1/2"	IPS	7.87	4.53	2.43	B	02-ETT-2202077
2"	IPS	2"	IPS	7.87	4.53	2.65	B	02-ETT-2202013
3"	IPS	1/2"	CTS	5.31	1.85	2.14	A	02-ETT-2202014
3"	IPS	1/2"	IPS	5.31	1.85	2.16	A	02-ETT-2202015
3"	IPS	3/4"	CTS	5.31	1.85	2.16	A	02-ETT-2202016
3"	IPS	3/4"	IPS	5.31	2.05	2.18	A	02-ETT-2202017
3"	IPS	1"	CTS	5.31	2.05	2.18	A	02-ETT-2202018
3"	IPS	1"	IPS	5.31	2.52	2.21	A	02-ETT-2202019
3"	IPS	1 1/4"	IPS	5.31	3.50	2.23	A	02-ETT-2202020
3"	IPS	1 1/4"	CTS	5.31	2.52	2.21	A	02-ETT-2202078
3"	IPS	1 1/2"	IPS	7.09	3.94	3.20	C	02-ETT-2202079
3"	IPS	2"	IPS	7.09	4.33	3.29	C	02-ETT-2202021
4"	IPS	1/2"	CTS	5.31	1.89	2.25	A	02-ETT-2202022
4"	IPS	1/2"	IPS	5.31	1.89	2.27	A	02-ETT-2202023
4"	IPS	3/4"	CTS	5.31	1.89	2.27	A	02-ETT-2202024
4"	IPS	3/4"	IPS	5.31	2.17	2.29	A	02-ETT-2202025
4"	IPS	1"	CTS	5.31	2.17	2.34	A	02-ETT-2202026
4"	IPS	1"	IPS	5.31	2.68	2.36	A	02-ETT-2202027
4"	IPS	1 1/4"	IPS	5.31	2.76	2.38	A	02-ETT-2202028
4"	IPS	1 1/4"	CTS	5.31	2.68	2.36	A	02-ETT-2202627
4"	IPS	1 1/2"	IPS	7.09	2.95	2.38	A	02-ETT-2202029
4"	IPS	2"	IPS	7.09	2.95	3.31	A	02-ETT-2202030
6"	IPS	1/2"	CTS	5.31	2.01	1.72	C	02-ETT-2202036
6"	IPS	1/2"	IPS	5.31	2.01	1.72	C	02-ETT-2202037
6"	IPS	3/4"	CTS	5.31	2.01	1.72	C	02-ETT-2202038
6"	IPS	3/4"	IPS	5.31	1.89	1.74	C	02-ETT-2202039
6"	IPS	1"	CTS	5.31	1.89	1.74	C	02-ETT-2202040
6"	IPS	1"	IPS	5.31	3.27	1.76	C	02-ETT-2202041
6"	IPS	1 1/4"	IPS	5.31	3.50	1.79	C	02-ETT-2202043
6"	IPS	1 1/4"	CTS	5.31	3.27	1.76	C	02-ETT-2202090
6"	IPS	1 1/2"	IPS	7.09	4.06	2.87	C	02-ETT-2202091
6"	IPS	2"	IPS	7.09	4.33	2.87	C	02-ETT-2202045
8"	IPS	1/2"	CTS	5.31	2.01	1.72	C	02-ETT-2202052
8"	IPS	1/2"	IPS	5.31	2.01	1.72	C	02-ETT-2202053
8"	IPS	3/4"	CTS	5.31	2.01	1.74	C	02-ETT-2202054
8"	IPS	3/4"	IPS	5.31	1.89	1.76	C	02-ETT-2202055

All dimensions are approximated and listed in inches



SDR 11 ELECTROFUSION TAPPING TEES DUAL RATED WATER/NATURAL GAS

Water - 240 PSI at 73 Deg F Sustainable Maximum Operating Pressure

Gas - 150 PSI at 73 Deg F Sustainable Maximum Operating Pressure

- Suitable for *WATER*, Fluids & Slurries
- Engineered for PE3408, PE4710 & PE100 HDPE Pipe Systems

Manufactured in accordance with ASTM F-714, ASTM F-1055, ASTM D-2513 ASTM D-3035, ASTM D-3261, ASTM D-3350, AWWA C-901, AWWA C-906, DIN 16963, EN 1555, EN 12201, and ISO-9001 Certified

Base (D)	Base Norm	Outlet (d)	Outlet Norm	H	L	Unit Weight in lbs	Type	Part Number
8"	IPS	1"	CTS	5.31	1.89	1.76	C	02-ETT-2202056
8"	IPS	1"	IPS	5.31	3.27	1.79	C	02-ETT-2202057
8"	IPS	1 1/4"	IPS	5.31	3.50	1.81	C	02-ETT-2202065
8"	IPS	1 1/4"	CTS	5.31	3.27	1.79	C	02-ETT-2202102
8"	IPS	1 1/2"	IPS	7.09	3.39	2.76	C	02-ETT-2202103
8"	IPS	2"	IPS	7.09	4.45	2.76	C	02-ETT-2202058
3"	DIPS	1/2"	CTS	5.31	1.89	2.21	A	02-ETT-2202112
3"	DIPS	1/2"	IPS	5.31	1.89	2.25	A	02-ETT-2202113
3"	DIPS	3/4"	CTS	5.31	1.89	2.25	A	02-ETT-2202114
3"	DIPS	3/4"	IPS	5.31	2.17	2.29	A	02-ETT-2202115
3"	DIPS	1"	CTS	5.31	2.17	2.29	A	02-ETT-2202116
3"	DIPS	1"	IPS	5.31	2.68	2.36	A	02-ETT-2202117
3"	DIPS	1 1/4"	IPS	5.31	2.76	2.38	A	02-ETT-2202118
3"	DIPS	1 1/4"	CTS	5.31	2.68	2.36	A	02-ETT-2202119
3"	DIPS	1 1/2"	IPS	7.09	2.95	3.31	C	02-ETT-2202120
3"	DIPS	2"	IPS	7.09	2.95	3.31	C	02-ETT-2202121
4"	DIPS	1/2"	CTS	5.31	1.89	2.27	A	02-ETT-2202122
4"	DIPS	1/2"	IPS	5.31	1.89	2.29	A	02-ETT-2202123
4"	DIPS	3/4"	CTS	5.31	1.89	2.29	A	02-ETT-2202031
4"	DIPS	3/4"	IPS	5.31	2.17	2.32	A	02-ETT-2202032
4"	DIPS	1"	CTS	5.31	2.17	2.32	A	02-ETT-2202033
4"	DIPS	1"	IPS	5.31	2.68	2.36	A	02-ETT-2202034
4"	DIPS	1 1/4"	IPS	5.31	2.76	2.38	A	02-ETT-2202124
4"	DIPS	1 1/4"	CTS	5.31	2.68	2.36	A	02-ETT-2202125
4"	DIPS	1 1/2"	IPS	7.09	2.95	3.31	C	02-ETT-2202126
4"	DIPS	2"	IPS	7.09	2.95	3.31	C	02-ETT-2202127
6"	DIPS	1/2"	CTS	5.31	2.01	1.72	C	02-ETT-2202046
6"	DIPS	1/2"	IPS	5.31	2.01	1.72	C	02-ETT-2202128
6"	DIPS	3/4"	CTS	5.31	2.01	1.72	C	02-ETT-2202047
6"	DIPS	3/4"	IPS	5.31	1.89	1.74	C	02-ETT-2202048
6"	DIPS	1"	CTS	5.31	1.89	1.76	C	02-ETT-2202049
6"	DIPS	1"	IPS	5.31	3.27	1.76	C	02-ETT-2202050
6"	DIPS	1 1/4"	IPS	5.31	3.50	1.79	C	02-ETT-2202129
6"	DIPS	1 1/4"	CTS	5.31	3.27	1.76	C	02-ETT-2202130
6"	DIPS	1 1/2"	IPS	7.09	3.39	2.87	C	02-ETT-2202131
6"	DIPS	2"	IPS	7.09	3.39	2.87	C	02-ETT-2202051
8"	DIPS	1/2"	CTS	5.31	2.01	1.72	C	02-ETT-2202132
8"	DIPS	1/2"	IPS	5.31	2.01	1.74	C	02-ETT-2202133
8"	DIPS	3/4"	CTS	5.31	2.01	1.74	C	02-ETT-2202059

All dimensions are approximated and listed in inches

8"	DIPS	3/4"	IPS	5.31	1.89	1.74	C	02-ETT-2202060
8"	DIPS	1"	CTS	5.31	1.89	1.76	C	02-ETT-2202061

All dimensions are approximated and listed in inches

SDR 11 ELECTROFUSION TAPPING TEES DUAL RATED WATER/NATURAL GAS

Water - 240 PSI at 73 Deg F Sustainable Maximum Operating Pressure

Gas - 150 PSI at 73 Deg F Sustainable Maximum Operating Pressure

- Suitable for *WATER*, Fluids & Slurries
- Engineered for PE3408, PE4710 & PE100 HDPE Pipe Systems

Manufactured in accordance with ASTM F-714, ASTM F-1055, ASTM D-2513 ASTM D-3035, ASTM D-3261, ASTM D-3350, AWWA C-901, AWWA C-906, DIN 16963, EN 1555, EN 12201, and ISO-9001 Certified

Base (D)	Base Norm	Outlet (d)	Outlet Norm	H	L	Unit Weight in lbs	Type	Part Number
8"	DIPS	1"	IPS	5.31	3.27	1.79	C	02-ETT-2202134
8"	DIPS	1 1/4"	IPS	5.31	3.50	1.81	C	02-ETT-2202135
8"	DIPS	1 1/4"	CTS	5.31	3.27	1.79	C	02-ETT-2202136
8"	DIPS	1 1/2"	IPS	7.09	3.39	2.76	C	02-ETT-2202137
8"	DIPS	2"	IPS	7.09	4.45	2.76	C	02-ETT-2202138

All dimensions are approximated and listed in inches

SDR 11 ELECTROFUSION SMALL BRANCH SADDLES

Water - 240 PSI at 73 Deg F Sustainable Maximum Operating Pressure

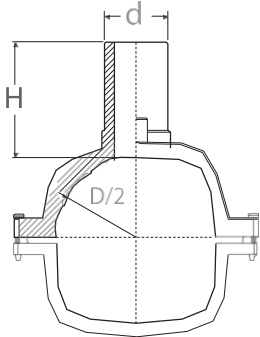
Gas - 150 PSI at 73 Deg F Sustainable Maximum Operating Pressure

- Suitable for *WATER*, Fluids & Slurries
- Engineered for PE3408, PE4710 & PE100 HDPE Pipe Systems

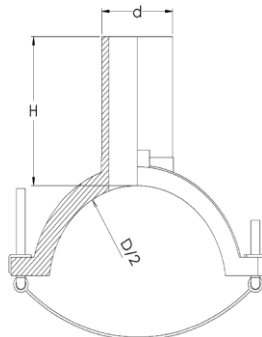
Manufactured in accordance with ASTM F-714, ASTM F-1055, ASTM D-2513, ASTM D-3035, ASTM D-3261, ASTM D-3350, AWWA C-901, AWWA C-906, DIN 16963, EN 1555, and EN 12201



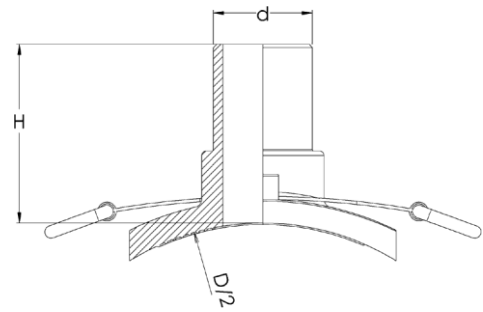
TYPE A



TYPE B



TYPE C



Base (D)	Base Norm	Outlet (d)	Outlet Norm	H	Unit Weight in lbs	Type	Part Number
1 1/4"	IPS	1/2"	CTS	2.95	0.32	A	02-EBS-2204554
1 1/4"	IPS	1/2"	IPS	2.95	0.33	A	02-EBS-2204555
1 1/4"	IPS	3/4"	CTS	2.95	0.33	A	02-EBS-2204556
1 1/4"	IPS	3/4"	IPS	2.95	0.36	A	02-EBS-2204051
1 1/4"	IPS	1"	CTS	2.95	0.39	A	02-EBS-2204557
1 1/4"	IPS	1"	IPS	2.95	0.40	A	02-EBS-2204325
1 1/2"	IPS	1/2"	CTS	2.95	0.33	A	02-EBS-2204558
1 1/2"	IPS	1/2"	IPS	2.95	0.35	A	02-EBS-2204052
1 1/2"	IPS	3/4"	CTS	2.95	0.36	A	02-EBS-2204559
1 1/2"	IPS	3/4"	IPS	2.95	0.37	A	02-EBS-2204766
1 1/2"	IPS	1"	CTS	2.95	0.37	A	02-EBS-2204053
1 1/2"	IPS	1"	IPS	2.95	0.41	A	02-EBS-2204054
1 1/2"	IPS	1 1/4"	CTS	2.95	0.41	A	02-EBS-2204561
2"	IPS	1/2"	CTS	3.03	0.77	A	02-EBS-2204562
2"	IPS	1/2"	IPS	3.03	0.77	A	02-EBS-2204056
2"	IPS	3/4"	CTS	3.03	0.77	A	02-EBS-2204563
2"	IPS	3/4"	IPS	3.03	0.79	A	02-EBS-2204057
2"	IPS	1"	CTS	3.03	0.79	A	02-EBS-2204564
2"	IPS	1"	IPS	3.03	0.86	A	02-EBS-2204058
2"	IPS	1 1/4"	IPS	3.03	0.88	A	02-EBS-2204050
2"	IPS	1 1/4"	CTS	3.03	0.86	A	02-EBS-2204565

All dimensions are approximated and listed in inches



SDR 11 ELECTROFUSION SMALL BRANCH SADDLES

Water - 240 PSI at 73 Deg F Sustainable Maximum Operating Pressure

Gas - 150 PSI at 73 Deg F Sustainable Maximum Operating Pressure

- Suitable for *WATER*, Fluids & Slurries
- Engineered for PE3408, PE4710 & PE100 HDPE Pipe Systems

Manufactured in accordance with ASTM F-714, ASTM F-1055, ASTM D-2513, ASTM D-3035, ASTM D-3261, ASTM D-3350, AWWA C-901, AWWA C-906, DIN 16963, EN 1555, and EN 12201

Base (D)	Base Norm	Outlet (d)	Outlet Norm	H	Unit Weight in lbs	Type	Part Number
2"	IPS	1 1/2"	IPS	4.92	1.65	A	02-EBS-2204059
2"	IPS	2"	IPS	4.92	1.76	A	02-EBS-2204060
3"	IPS	1/2"	CTS	3.74	1.46	A	02-EBS-2204566
3"	IPS	1/2"	IPS	3.74	1.46	A	02-EBS-2204062
3"	IPS	3/4"	CTS	3.74	1.46	A	02-EBS-2204567
3"	IPS	3/4"	IPS	3.74	1.50	A	02-EBS-2204063
3"	IPS	1"	CTS	3.74	1.50	A	02-EBS-2204568
3"	IPS	1"	IPS	3.74	1.52	A	02-EBS-2204064
3"	IPS	1 1/4"	IPS	3.74	1.54	A	02-EBS-2204065
3"	IPS	1 1/4"	CTS	3.74	1.52	A	02-EBS-2204569
3"	IPS	1 1/2"	IPS	5.31	1.57	A	02-EBS-2204066
3"	IPS	2"	IPS	5.31	1.59	A	02-EBS-2204067
4"	IPS	1/2"	CTS	3.74	1.61	A	02-EBS-2204570
4"	IPS	1/2"	IPS	3.74	1.61	A	02-EBS-2204571
4"	IPS	3/4"	CTS	3.74	1.61	A	02-EBS-2204572
4"	IPS	3/4"	IPS	3.74	1.63	A	02-EBS-2204573
4"	IPS	1"	CTS	3.74	1.63	A	02-EBS-2204574
4"	IPS	1"	IPS	3.74	1.65	A	02-EBS-2204071
4"	IPS	1 1/4"	IPS	3.74	1.68	A	02-EBS-2204072
4"	IPS	1 1/4"	CTS	3.74	1.65	A	02-EBS-2204575
4"	IPS	1 1/2"	IPS	5.31	1.70	A	02-EBS-2204073
4"	IPS	2"	IPS	5.31	1.72	A	02-EBS-2204074
6"	IPS	1/2"	CTS	3.74	2.05	B	02-EBS-2204576
6"	IPS	1/2"	IPS	3.74	2.05	B	02-EBS-2204082
6"	IPS	3/4"	CTS	3.74	2.05	B	02-EBS-2204577
6"	IPS	3/4"	IPS	3.74	2.09	B	02-EBS-2204578
6"	IPS	1"	CTS	3.74	2.09	B	02-EBS-2204579
6"	IPS	1"	IPS	3.74	2.12	B	02-EBS-2204083
6"	IPS	1 1/4"	IPS	3.74	2.14	B	02-EBS-2204084
6"	IPS	1 1/4"	CTS	3.74	2.12	B	02-EBS-2204580
6"	IPS	1 1/2"	IPS	5.31	2.20	B	02-EBS-2204085
6"	IPS	2"	IPS	5.31	2.23	B	02-EBS-2204086
8"	IPS	1/2"	CTS	3.74	1.98	B	02-EBS-2204591
8"	IPS	1/2"	IPS	3.74	1.98	B	02-EBS-2204109
8"	IPS	3/4"	CTS	3.74	1.98	B	02-EBS-2204592
8"	IPS	3/4"	IPS	3.74	2.01	B	02-EBS-2204593
8"	IPS	1"	CTS	3.74	2.01	B	02-EBS-2204097
8"	IPS	1"	IPS	3.74	2.03	B	02-EBS-2204098
8"	IPS	1 1/4"	IPS	3.74	2.05	B	02-EBS-2204099

All dimensions are approximated and listed in inches



SDR 11 ELECTROFUSION SMALL BRANCH SADDLES

8"	IPS	1 1/4"	CTS	3.74	2.03	B	02-EBS-2204594
8"	IPS	1 1/2"	IPS	5.31	2.07	B	02-EBS-2204100
8"	IPS	2"	IPS	5.31	2.09	B	02-EBS-2204101

All dimensions are approximated and listed in inches



SDR 11 ELECTROFUSION SMALL BRANCH SADDLES

Water - 240 PSI at 73 Deg F Sustainable Maximum Operating Pressure

Gas - 150 PSI at 73 Deg F Sustainable Maximum Operating Pressure

- Suitable for *WATER*, Fluids & Slurries
- Engineered for PE3408, PE4710 & PE100 HDPE Pipe Systems

Manufactured in accordance with ASTM F-714, ASTM F-1055, ASTM D-2513, ASTM D-3035, ASTM D-3261, ASTM D-3350, AWWA C-901, AWWA C-906, DIN 16963, EN 1555, and EN 12201

Base (D)	Base Norm	Outlet (d)	Outlet Norm	H	Unit Weight in lbs	Type	Part Number
10"	IPS	1/2"	CTS	3.94	1.46	C	02-EBS-2204595
10"	IPS	1/2"	IPS	3.94	1.46	C	02-EBS-2204118
10"	IPS	3/4"	CTS	3.94	1.46	C	02-EBS-2204596
10"	IPS	3/4"	IPS	3.94	1.46	C	02-EBS-2204597
10"	IPS	1"	CTS	3.94	1.46	C	02-EBS-2204119
10"	IPS	1"	IPS	5.12	1.48	C	02-EBS-2204120
10"	IPS	1 1/4"	IPS	4.13	1.50	C	02-EBS-2204121
10"	IPS	1 1/4"	CTS	5.12	1.48	C	02-EBS-2204598
10"	IPS	1 1/2"	IPS	5.12	1.50	C	02-EBS-2204122
10"	IPS	2"	IPS	4.92	1.50	C	02-EBS-2204123
12"	IPS	1/2"	CTS	3.94	1.48	C	02-EBS-2204599
12"	IPS	1/2"	IPS	3.94	1.48	C	02-EBS-2204134
12"	IPS	3/4"	CTS	3.94	1.48	C	02-EBS-2204600
12"	IPS	3/4"	IPS	3.94	1.50	C	02-EBS-2204601
12"	IPS	1"	CTS	3.94	1.50	C	02-EBS-2204602
12"	IPS	1"	IPS	5.12	1.52	C	02-EBS-2204135
12"	IPS	1 1/4"	IPS	4.13	1.54	C	02-EBS-2204136
12"	IPS	1 1/4"	CTS	5.12	1.52	C	02-EBS-2204603
12"	IPS	1 1/2"	IPS	5.12	1.54	C	02-EBS-2204137
12"	IPS	2"	IPS	4.92	1.54	C	02-EBS-2204138
14"	IPS	1/2"	CTS	3.94	1.68	C	02-EBS-2204604
14"	IPS	1/2"	IPS	3.94	1.68	C	02-EBS-2204769
14"	IPS	3/4"	CTS	3.94	1.68	C	02-EBS-2204605
14"	IPS	3/4"	IPS	3.94	1.70	C	02-EBS-2204606
14"	IPS	1"	CTS	3.94	1.70	C	02-EBS-2204607
14"	IPS	1"	IPS	5.12	1.72	C	02-EBS-2204153
14"	IPS	1 1/4"	IPS	4.13	1.68	C	02-EBS-2204770
14"	IPS	1 1/4"	CTS	5.12	1.72	C	02-EBS-2204608
14"	IPS	1 1/2"	IPS	5.12	1.70	C	02-EBS-2204332
14"	IPS	2"	IPS	4.92	1.72	C	02-EBS-2204154
16"	IPS	1/2"	CTS	3.94	0.95	C	02-EBS-2204610
16"	IPS	1/2"	IPS	3.94	0.95	C	02-EBS-2204771
16"	IPS	3/4"	CTS	3.94	0.95	C	02-EBS-2204611
16"	IPS	3/4"	IPS	3.94	0.97	C	02-EBS-2204612
16"	IPS	1"	CTS	3.94	0.97	C	02-EBS-2204613
16"	IPS	1"	IPS	5.12	0.99	C	02-EBS-2204166
16"	IPS	1 1/4"	IPS	4.13	1.01	C	02-EBS-2204773
16"	IPS	1 1/4"	CTS	5.12	0.99	C	02-EBS-2204615
16"	IPS	1 1/2"	IPS	5.12	1.15	C	02-EBS-2204774

All dimensions are approximated and listed in inches



SDR 11 ELECTROFUSION SMALL BRANCH SADDLES

16"	IPS	2"	IPS	4.92	1.15	C	02-EBS-2204167
18"	IPS	1/2"	CTS	3.94	0.95	C	02-EBS-2204617
18"	IPS	1/2"	IPS	3.94	0.95	C	02-EBS-2204775

All dimensions are approximated and listed in inches

SDR 11 ELECTROFUSION SMALL BRANCH SADDLES

Water - 240 PSI at 73 Deg F Sustainable Maximum Operating Pressure

Gas - 150 PSI at 73 Deg F Sustainable Maximum Operating Pressure

- Suitable for *WATER*, Fluids & Slurries
- Engineered for PE3408, PE4710 & PE100 HDPE Pipe Systems

Manufactured in accordance with ASTM F-714, ASTM F-1055, ASTM D-2513, ASTM D-3035, ASTM D-3261, ASTM D-3350, AWWA C-901, AWWA C-906, DIN 16963, EN 1555, and EN 12201

Base (D)	Base Norm	Outlet (d)	Outlet Norm	H	Unit Weight in lbs	Type	Part Number
18"	IPS	3/4"	CTS	3.94	0.95	C	02-EBS-2204618
18"	IPS	3/4"	IPS	3.94	0.97	C	02-EBS-2204619
18"	IPS	1"	CTS	3.94	0.97	C	02-EBS-2204620
18"	IPS	1"	IPS	5.12	0.99	C	02-EBS-2204177
18"	IPS	1 1/4"	IPS	4.13	1.01	C	02-EBS-2204777
18"	IPS	1 1/4"	CTS	5.12	0.99	C	02-EBS-2204622
18"	IPS	1 1/2"	IPS	5.12	1.15	C	02-EBS-2204778
18"	IPS	2"	IPS	4.92	1.15	C	02-EBS-2204178
3"	DIPS	1/2"	CTS	3.74	1.61	A	02-EBS-2204624
3"	DIPS	1/2"	IPS	3.74	1.61	A	02-EBS-2204625
3"	DIPS	3/4"	CTS	3.74	1.61	A	02-EBS-2204626
3"	DIPS	3/4"	IPS	3.74	1.63	A	02-EBS-2204627
3"	DIPS	1"	CTS	3.74	1.63	A	02-EBS-2204628
3"	DIPS	1"	IPS	3.74	1.65	A	02-EBS-2204629
3"	DIPS	1 1/4"	IPS	3.74	1.68	A	02-EBS-2204630
3"	DIPS	1 1/4"	CTS	3.74	1.65	A	02-EBS-2204631
3"	DIPS	1 1/2"	IPS	5.31	1.70	A	02-EBS-2204632
3"	DIPS	2"	IPS	5.31	1.72	A	02-EBS-2204633
4"	DIPS	1/2"	CTS	3.74	1.65	B	02-EBS-2204634
4"	DIPS	1/2"	IPS	3.74	1.65	B	02-EBS-2204635
4"	DIPS	3/4"	CTS	3.74	1.65	B	02-EBS-2204636
4"	DIPS	3/4"	IPS	3.74	1.65	B	02-EBS-2204637
4"	DIPS	1"	CTS	3.74	1.65	B	02-EBS-2204638
4"	DIPS	1"	IPS	3.74	1.68	B	02-EBS-2204077
4"	DIPS	1 1/4"	IPS	3.74	1.72	B	02-EBS-2204639
4"	DIPS	1 1/4"	CTS	3.74	1.68	B	02-EBS-2204640
4"	DIPS	1 1/2"	IPS	5.31	1.74	B	02-EBS-2204641
4"	DIPS	2"	IPS	5.31	1.76	B	02-EBS-2204078
6"	DIPS	1/2"	CTS	3.74	2.05	B	02-EBS-2204642
6"	DIPS	1/2"	IPS	3.74	2.05	B	02-EBS-2204643
6"	DIPS	3/4"	CTS	3.74	2.05	B	02-EBS-2204644
6"	DIPS	3/4"	IPS	3.74	2.09	B	02-EBS-2204645
6"	DIPS	1"	CTS	3.74	2.09	B	02-EBS-2204646
6"	DIPS	1"	IPS	3.74	2.12	B	02-EBS-2204091
6"	DIPS	1 1/4"	IPS	3.74	2.14	B	02-EBS-2204647
6"	DIPS	1 1/4"	CTS	3.74	2.12	B	02-EBS-2204648
6"	DIPS	1 1/2"	IPS	5.31	2.20	B	02-EBS-2204649
6"	DIPS	2"	IPS	5.31	2.23	B	02-EBS-2204092
8"	DIPS	1/2"	CTS	3.94	1.98	B	02-EBS-2204650

All dimensions are approximated and listed in inches

SDR 11 ELECTROFUSION SMALL BRANCH SADDLES

8"	DIPS	1/2"	IPS	3.94	1.98	B	02-EBS-2204651
8"	DIPS	3/4"	CTS	3.94	1.98	B	02-EBS-2204652
8"	DIPS	3/4"	IPS	3.94	2.01	B	02-EBS-2204110

All dimensions are approximated and listed in inches



SDR 11 ELECTROFUSION SMALL BRANCH SADDLES

Water - 240 PSI at 73 Deg F Sustainable Maximum Operating Pressure

Gas - 150 PSI at 73 Deg F Sustainable Maximum Operating Pressure

- Suitable for *WATER*, Fluids & Slurries
- Engineered for PE3408, PE4710 & PE100 HDPE Pipe Systems

Manufactured in accordance with ASTM F-714, ASTM F-1055, ASTM D-2513 ASTM D-3035, ASTM D-3261, ASTM D-3350, AWWA C-901, AWWA C-906, DIN 16963, EN 1555, and EN 12201

Base (D)	Base Norm	Outlet (d)	Outlet Norm	H	Unit Weight in lbs	Type	Part Number
8"	DIPS	1"	CTS	3.94	2.01	B	02-EBS-2204653
8"	DIPS	1"	IPS	5.12	2.03	B	02-EBS-2204111
8"	DIPS	1 1/4"	IPS	4.13	2.05	B	02-EBS-2204654
8"	DIPS	1 1/4"	CTS	5.12	2.03	B	02-EBS-2204655
8"	DIPS	1 1/2"	IPS	5.12	2.07	B	02-EBS-2204656
8"	DIPS	2"	IPS	4.92	2.09	B	02-EBS-2204112
10"	DIPS	1/2"	CTS	3.94	1.46	C	02-EBS-2204657
10"	DIPS	1/2"	IPS	3.94	1.46	C	02-EBS-2204658
10"	DIPS	3/4"	CTS	3.94	1.46	C	02-EBS-2204659
10"	DIPS	3/4"	IPS	3.94	1.46	C	02-EBS-2204660
10"	DIPS	1"	CTS	3.94	1.46	C	02-EBS-2204661
10"	DIPS	1"	IPS	5.12	1.48	C	02-EBS-2204129
10"	DIPS	1 1/4"	IPS	4.13	1.50	C	02-EBS-2204662
10"	DIPS	1 1/4"	CTS	5.12	1.48	C	02-EBS-2204663
10"	DIPS	1 1/2"	IPS	5.12	1.50	C	02-EBS-2204664
10"	DIPS	2"	IPS	4.92	1.50	C	02-EBS-2204130
12"	DIPS	1/2"	CTS	3.94	1.68	C	02-EBS-2204665
12"	DIPS	1/2"	IPS	3.94	1.68	C	02-EBS-2204151
12"	DIPS	3/4"	CTS	3.94	1.68	C	02-EBS-2204666
12"	DIPS	3/4"	IPS	3.94	1.70	C	02-EBS-2204667
12"	DIPS	1"	CTS	3.94	1.70	C	02-EBS-2204668
12"	DIPS	1"	IPS	5.12	1.72	C	02-EBS-2204146
12"	DIPS	1 1/4"	IPS	4.13	1.68	C	02-EBS-2204669
12"	DIPS	1 1/4"	CTS	5.12	1.72	C	02-EBS-2204670
12"	DIPS	1 1/2"	IPS	5.12	1.70	C	02-EBS-2204671
12"	DIPS	2"	IPS	4.92	1.72	C	02-EBS-2204147
14"	DIPS	1/2"	CTS	3.94	0.95	C	02-EBS-2204672
14"	DIPS	1/2"	IPS	3.94	0.95	C	02-EBS-2204673
14"	DIPS	3/4"	CTS	3.94	0.95	C	02-EBS-2204674
14"	DIPS	3/4"	IPS	3.94	0.97	C	02-EBS-2204675
14"	DIPS	1"	CTS	3.94	0.97	C	02-EBS-2204676
14"	DIPS	1"	IPS	5.12	0.99	C	02-EBS-2204160
14"	DIPS	1 1/4"	IPS	4.13	1.01	C	02-EBS-2204677
14"	DIPS	1 1/4"	CTS	5.12	0.99	C	02-EBS-2204678
14"	DIPS	1 1/2"	IPS	5.12	1.15	C	02-EBS-2204679
14"	DIPS	2"	IPS	4.92	1.15	C	02-EBS-2204161
16"	DIPS	1/2"	CTS	3.94	0.95	C	02-EBS-2204680
16"	DIPS	1/2"	IPS	3.94	0.95	C	02-EBS-2204681
16"	DIPS	3/4"	CTS	3.94	0.95	C	02-EBS-2204682

All dimensions are approximated and listed in inches

SDR 11 ELECTROFUSION SMALL BRANCH SADDLES

16"	DIPS	3/4"	IPS	3.94	0.97	C	02-EBS-2204683
16"	DIPS	1"	CTS	3.94	0.97	C	02-EBS-2204684
16"	DIPS	1"	IPS	5.12	0.99	C	02-EBS-2204175

All dimensions are approximated and listed in inches

SDR 11 ELECTROFUSION SMALL BRANCH SADDLES

Water - 240 PSI at 73 Deg F Sustainable Maximum Operating Pressure

Gas - 150 PSI at 73 Deg F Sustainable Maximum Operating Pressure

- Suitable for *WATER*, Fluids & Slurries
- Engineered for PE3408, PE4710 & PE100 HDPE Pipe Systems

Manufactured in accordance with ASTM F-714, ASTM F-1055, ASTM D-2513 ASTM D-3035, ASTM D-3261, ASTM D-3350, AWWA C-901, AWWA C-906, DIN 16963, EN 1555, and EN 12201

Base (D)	Base Norm	Outlet (d)	Outlet Norm	H	Unit Weight in lbs	Type	Part Number
16"	DIPS	1 1/4"	IPS	4.13	1.01	C	02-EBS-2204685
16"	DIPS	1 1/4"	CTS	5.12	0.99	C	02-EBS-2204686
16"	DIPS	1 1/2"	IPS	5.12	1.15	C	02-EBS-2204687
16"	DIPS	2"	IPS	4.92	1.15	C	02-EBS-2204172

All dimensions are approximated and listed in inches

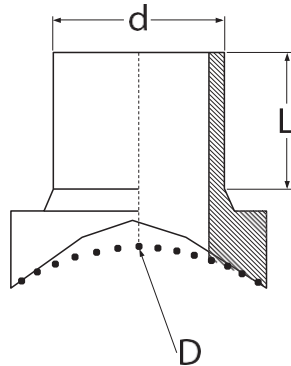
SDR 11 ELECTROFUSION LARGE BRANCH SADDLES

Water - 240 PSI at 73 Deg F Sustainable Maximum Operating Pressure

Gas - 150 PSI at 73 Deg F Sustainable Maximum Operating Pressure

- Suitable for *WATER*, Fluids & Slurries
- Engineered for PE3408, PE4710 & PE100 HDPE Pipe Systems

Manufactured in accordance with ASTM F-714, ASTM F-1055, ASTM D-2513, ASTM D-3035, ASTM D-3261, ASTM D-3350, AWWA C-901, AWWA C-906, DIN 16963, EN 1555, EN 12201, and ISO-9001 Certified



Base (D)	Base Norm	Outlet (d)	Outlet Norm	L	Unit Weight in lbs	Part Number
3"	IPS	3"	IPS	3.54	1.32	02-EBS-2204068
4"	IPS	3"	IPS	3.54	1.32	02-EBS-2204075
4"	IPS	4"	IPS	3.54	2.65	02-EBS-2204076
6"	IPS	3"	IPS	3.54	1.32	02-EBS-2204087
6"	IPS	4"	IPS	3.54	2.65	02-EBS-2204088
6"	IPS	5"	IPS	4.33	3.97	02-EBS-2204448
6"	IPS	6"	IPS	5.91	4.20	02-EBS-1812157
8"	IPS	3"	IPS	3.54	1.32	02-EBS-2204102
8"	IPS	4"	IPS	3.54	2.65	02-EBS-2204103
8"	IPS	5"	IPS	4.33	3.97	02-EBS-2204106
8"	IPS	6"	IPS	5.91	5.07	02-EBS-2204107
8"	IPS	7"	IPS	5.91	5.07	02-EBS-2204451
8"	IPS	8"	IPS	5.91	5.07	02-EBS-2204109
10"	IPS	3"	IPS	3.54	1.32	02-EBS-2204124
10"	IPS	4"	IPS	3.54	2.65	02-EBS-2204125
10"	IPS	5"	IPS	4.33	3.97	02-EBS-2204048
10"	IPS	6"	IPS	5.91	5.07	02-EBS-2204127
10"	IPS	7"	IPS	5.91	5.07	02-EBS-2204452
10"	IPS	8"	IPS	5.91	9.92	02-EBS-2204128
12"	IPS	3"	IPS	3.54	1.32	02-EBS-2204139
12"	IPS	4"	IPS	3.54	2.65	02-EBS-2204140
12"	IPS	5"	IPS	4.33	3.97	02-EBS-2204453
12"	IPS	6"	IPS	5.91	5.07	02-EBS-2204141
12"	IPS	7"	IPS	5.91	5.07	02-EBS-2204454
12"	IPS	8"	IPS	5.91	9.92	02-EBS-2204143
14"	IPS	3"	IPS	3.54	1.32	02-EBS-2204155
14"	IPS	4"	IPS	3.54	2.65	02-EBS-2204156

All dimensions are approximated and listed in inches



SDR 11 ELECTROFUSION LARGE BRANCH SADDLES

14"	IPS	5"	IPS	4.33	3.97	02-EBS-2204455
14"	IPS	6"	IPS	5.91	5.07	02-EBS-2204157

All dimensions are approximated and listed in inches



SDR 11 ELECTROFUSION LARGE BRANCH SADDLES

Water - 240 PSI at 73 Deg F Sustainable Maximum Operating Pressure

Gas - 150 PSI at 73 Deg F Sustainable Maximum Operating Pressure

- Suitable for *WATER*, Fluids & Slurries
- Engineered for PE3408, PE4710 & PE100 HDPE Pipe Systems

Manufactured in accordance with ASTM F-714, ASTM F-1055, ASTM D-2513, ASTM D-3035, ASTM D-3261, ASTM D-3350, AWWA C-901, AWWA C-906, DIN 16963, EN 1555, EN 12201, and ISO-9001 Certified

Base (D)	Base Norm	Outlet (d)	Outlet Norm	L	Unit Weight in lbs	Part Number
14"	IPS	7"	IPS	5.91	5.07	02-EBS-2204456
14"	IPS	8"	IPS	5.91	9.92	02-EBS-2204158
16"	IPS	3"	IPS	3.54	1.32	02-EBS-2204168
16"	IPS	4"	IPS	3.54	2.65	02-EBS-2204169
16"	IPS	5"	IPS	4.33	3.97	02-EBS-2204457
16"	IPS	6"	IPS	5.91	5.07	02-EBS-2204170
16"	IPS	7"	IPS	5.91	5.07	02-EBS-2204458
16"	IPS	8"	IPS	5.91	9.92	02-EBS-2204171
18"	IPS	3"	IPS	3.54	1.32	02-EBS-2204179
18"	IPS	4"	IPS	3.54	2.65	02-EBS-2204180
18"	IPS	5"	IPS	4.33	3.97	02-EBS-2204459
18"	IPS	6"	IPS	5.91	5.07	02-EBS-2204181
18"	IPS	7"	IPS	5.91	5.07	02-EBS-2204460
18"	IPS	8"	IPS	5.91	9.92	02-EBS-1812158
20"	IPS	3"	IPS	3.54	1.32	02-EBS-2204189
20"	IPS	4"	IPS	3.54	2.65	02-EBS-2204190
20"	IPS	5"	IPS	4.33	3.97	02-EBS-2204461
20"	IPS	6"	IPS	5.91	5.07	02-EBS-2204191
20"	IPS	7"	IPS	5.91	5.07	02-EBS-2204462
20"	IPS	8"	IPS	5.91	9.92	02-EBS-2204193
22"	IPS	3"	IPS	3.54	1.32	02-EBS-2204200
22"	IPS	4"	IPS	3.54	2.65	02-EBS-2204201
22"	IPS	5"	IPS	4.33	3.97	02-EBS-2204463
22"	IPS	6"	IPS	5.91	5.07	02-EBS-2204291
22"	IPS	7"	IPS	5.91	5.07	02-EBS-2204464
22"	IPS	8"	IPS	5.91	9.92	02-EBS-2204202
24"	IPS	3"	IPS	3.54	1.32	02-EBS-2204205
24"	IPS	4"	IPS	3.54	2.65	02-EBS-2204206
24"	IPS	5"	IPS	4.33	3.97	02-EBS-2204466
24"	IPS	6"	IPS	5.91	5.07	02-EBS-2204207
24"	IPS	7"	IPS	5.91	5.07	02-EBS-2204467
24"	IPS	8"	IPS	5.91	9.92	02-EBS-2204209
30"	IPS	3"	IPS	3.54	1.32	02-EBS-2204225
30"	IPS	4"	IPS	3.54	2.65	02-EBS-2204226
30"	IPS	5"	IPS	4.33	3.97	02-EBS-2204468
30"	IPS	6"	IPS	5.91	5.07	02-EBS-2204227
30"	IPS	7"	IPS	5.91	5.07	02-EBS-2204469
30"	IPS	8"	IPS	5.91	9.92	02-EBS-2204228
32"	IPS	3"	IPS	3.54	1.32	02-EBS-2204230

All dimensions are approximated and listed in inches



SDR 11 ELECTROFUSION LARGE BRANCH SADDLES

32"	IPS	4"	IPS	3.54	2.65	02-EBS-2204231
32"	IPS	5"	IPS	4.33	3.97	02-EBS-2204470

All dimensions are approximated and listed in inches



SDR 11 ELECTROFUSION LARGE BRANCH SADDLES

Water - 240 PSI at 73 Deg F Sustainable Maximum Operating Pressure

Gas - 150 PSI at 73 Deg F Sustainable Maximum Operating Pressure

- Suitable for *WATER*, Fluids & Slurries
- Engineered for PE3408, PE4710 & PE100 HDPE Pipe Systems

Manufactured in accordance with ASTM F-714, ASTM F-1055, ASTM D-2513, ASTM D-3035, ASTM D-3261, ASTM D-3350, AWWA C-901, AWWA C-906, DIN 16963, EN 1555, EN 12201, and ISO-9001 Certified

Base (D)	Base Norm	Outlet (d)	Outlet Norm	L	Unit Weight in lbs	Part Number
32"	IPS	6"	IPS	5.91	5.07	02-EBS-2204233
32"	IPS	7"	IPS	5.91	5.07	02-EBS-2204471
32"	IPS	8"	IPS	5.91	9.92	02-EBS-2204234
36"	IPS	3"	IPS	3.54	1.32	02-EBS-2204238
36"	IPS	4"	IPS	3.54	2.65	02-EBS-2204239
36"	IPS	5"	IPS	4.33	3.97	02-EBS-2204472
36"	IPS	6"	IPS	5.91	5.07	02-EBS-2204240
36"	IPS	7"	IPS	5.91	5.07	02-EBS-2204473
36"	IPS	8"	IPS	5.91	9.92	02-EBS-2204241
42"	IPS	3"	IPS	3.54	1.32	02-EBS-2204246
42"	IPS	4"	IPS	3.54	2.65	02-EBS-2204328
42"	IPS	5"	IPS	4.33	3.97	02-EBS-2204474
42"	IPS	6"	IPS	5.91	5.07	02-EBS-2204247
42"	IPS	7"	IPS	5.91	5.07	02-EBS-2204475
42"	IPS	8"	IPS	5.91	9.92	02-EBS-2204248
48"	IPS	3"	IPS	3.54	1.32	02-EBS-2204249
48"	IPS	4"	IPS	3.54	2.65	02-EBS-2204250
48"	IPS	5"	IPS	4.33	3.97	02-EBS-2204478
48"	IPS	6"	IPS	5.91	5.07	02-EBS-2204479
48"	IPS	7"	IPS	5.91	5.07	02-EBS-2204480
48"	IPS	8"	IPS	5.91	9.92	02-EBS-2204481
54"	IPS	3"	IPS	3.54	1.32	02-EBS-2204482
54"	IPS	4"	IPS	3.54	2.65	02-EBS-2204254
54"	IPS	5"	IPS	4.33	3.97	02-EBS-2204483
54"	IPS	6"	IPS	5.91	5.07	02-EBS-2204350
54"	IPS	7"	IPS	5.91	5.07	02-EBS-2204484
54"	IPS	8"	IPS	5.91	9.92	02-EBS-1810094
63"	IPS	3"	IPS	3.54	1.32	02-EBS-2204485
63"	IPS	4"	IPS	3.54	2.65	02-EBS-2204256
63"	IPS	5"	IPS	4.33	3.97	02-EBS-2204486
63"	IPS	6"	IPS	5.91	5.07	02-EBS-2204487
63"	IPS	7"	IPS	5.91	5.07	02-EBS-2204488
63"	IPS	8"	IPS	5.91	9.92	02-EBS-2204489
6"	DIPS	4"	DIPS	3.54	2.65	02-EBS-2204490
8"	DIPS	4"	DIPS	3.54	2.65	02-EBS-2204491
8"	DIPS	6"	DIPS	5.91	5.07	02-EBS-2204492
10"	DIPS	4"	DIPS	3.54	2.65	02-EBS-2204493
10"	DIPS	6"	DIPS	5.91	5.07	02-EBS-2204494
10"	DIPS	8"	DIPS	5.71	19.84	02-EBS-2204495

All dimensions are approximated and listed in inches



SDR 11 ELECTROFUSION LARGE BRANCH SADDLES

12"	DIPS	4"	DIPS	3.54	2.65	02-EBS-2204496
12"	DIPS	6"	DIPS	5.91	5.07	02-EBS-2204497

All dimensions are approximated and listed in inches

SDR 11 ELECTROFUSION LARGE BRANCH SADDLES

Water - 240 PSI at 73 Deg F Sustainable Maximum Operating Pressure

Gas - 150 PSI at 73 Deg F Sustainable Maximum Operating Pressure

- Suitable for *WATER*, Fluids & Slurries
- Engineered for PE3408, PE4710 & PE100 HDPE Pipe Systems

Manufactured in accordance with ASTM F-714, ASTM F-1055, ASTM D-2513, ASTM D-3035, ASTM D-3261, ASTM D-3350, AWWA C-901, AWWA C-906, DIN 16963, EN 1555, EN 12201, and ISO-9001 Certified

Base (D)	Base Norm	Outlet (d)	Outlet Norm	L	Unit Weight in lbs	Part Number
12"	DIPS	8"	DIPS	5.71	18.74	02-EBS-2204498
14"	DIPS	4"	DIPS	3.54	2.65	02-EBS-2204499
14"	DIPS	6"	DIPS	5.91	5.07	02-EBS-2204510
14"	DIPS	8"	DIPS	5.71	18.74	02-EBS-2204511
16"	DIPS	4"	DIPS	3.54	2.65	02-EBS-2204512
16"	DIPS	6"	DIPS	5.91	5.07	02-EBS-2204513
16"	DIPS	8"	DIPS	5.71	18.74	02-EBS-2204514
18"	DIPS	4"	DIPS	3.54	2.65	02-EBS-2204515
18"	DIPS	6"	DIPS	5.91	5.07	02-EBS-2204516
18"	DIPS	8"	DIPS	5.71	18.74	02-EBS-2204517
20"	DIPS	4"	DIPS	3.54	2.65	02-EBS-2204518
20"	DIPS	6"	DIPS	5.91	5.07	02-EBS-2204519
20"	DIPS	8"	DIPS	5.71	18.74	02-EBS-2204520
24"	DIPS	4"	DIPS	3.54	2.65	02-EBS-2204521
24"	DIPS	6"	DIPS	5.91	5.07	02-EBS-2204522
24"	DIPS	8"	DIPS	5.71	18.74	02-EBS-2204523
30"	DIPS	4"	DIPS	3.54	2.65	02-EBS-2204524
30"	DIPS	6"	DIPS	5.91	5.07	02-EBS-2204525
30"	DIPS	8"	DIPS	5.71	18.74	02-EBS-2204526
36"	DIPS	4"	DIPS	3.54	2.65	02-EBS-2204527
36"	DIPS	6"	DIPS	5.91	5.07	02-EBS-2204528
36"	DIPS	8"	DIPS	5.71	18.74	02-EBS-2204529
42"	DIPS	4"	DIPS	3.54	2.65	02-EBS-2204530
42"	DIPS	6"	DIPS	5.91	5.07	02-EBS-2204531
42"	DIPS	8"	DIPS	5.71	18.74	02-EBS-2204532
48"	DIPS	4"	DIPS	3.54	2.65	02-EBS-2204533
48"	DIPS	6"	DIPS	5.91	5.07	02-EBS-2204534
48"	DIPS	8"	DIPS	5.71	18.74	02-EBS-2204535

All dimensions are approximated and listed in inches

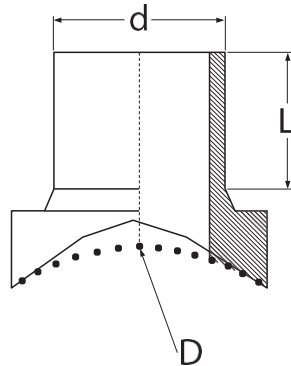
SDR 17 ELECTROFUSION LARGE BRANCH SADDLES

Water - 160 PSI at 73 Deg F Sustainable Maximum Operating Pressure

Gas - 90 PSI at 73 Deg F Sustainable Maximum Operating Pressure

- Suitable for *WATER*, Fluids & Slurries
- Engineered for PE3408, PE4710 & PE100 HDPE Pipe Systems

Manufactured in accordance with ASTM F-714, ASTM F-1055, ASTM D-2513, ASTM D-3035, ASTM D-3261, ASTM D-3350, AWWA C-901, AWWA C-906, DIN 16963, EN 1555, EN 12201, and ISO-9001 Certified



Base (D)	Base Norm	Outlet (d)	Outlet Norm	L	Unit Weight in lbs	Part Number
12'	IPS	10'	IPS	6.70	18.74	02-EBS-2204012
14'	IPS	10'	IPS	6.70	18.74	02-EBS-2204159
14'	IPS	12'	IPS	6.70	33.07	02-EBS-2204364
16'	IPS	10'	IPS	6.70	18.74	02-EBS-2204017
16'	IPS	12'	IPS	6.70	33.07	02-EBS-2204019
18'	IPS	10'	IPS	6.70	18.74	02-EBS-2204025
18'	IPS	12'	IPS	6.70	33.07	02-EBS-2204026
18'	IPS	14'	IPS	6.70	33.07	02-EBS-2204794
20'	IPS	10'	IPS	6.70	18.74	02-EBS-2204027
20'	IPS	12'	IPS	6.70	33.07	02-EBS-2204028
20'	IPS	14'	IPS	6.70	33.07	02-EBS-2204366
20'	IPS	16'	IPS	8.46	92.60	02-EBS-2204367
22'	IPS	10'	IPS	6.70	18.74	02-EBS-2204368
22'	IPS	12'	IPS	6.70	33.07	02-EBS-2204031
22'	IPS	14'	IPS	6.70	33.07	02-EBS-2204369
22'	IPS	16'	IPS	8.46	92.60	02-EBS-2204370
22'	IPS	16'	IPS	8.46	92.60	02-EBS-2204371
22'	IPS	18'	IPS	8.46	92.60	02-EBS-2204372
24'	IPS	10'	IPS	6.70	18.74	02-EBS-2204002
24'	IPS	12'	IPS	6.70	33.07	02-EBS-2204032
24'	IPS	14'	IPS	6.70	33.07	02-EBS-2204033
24'	IPS	16'	IPS	8.46	92.60	02-EBS-2204005
24'	IPS	18'	IPS	8.46	92.60	02-EBS-2204376
30'	IPS	10'	IPS	6.70	18.74	02-EBS-2204337
30'	IPS	12'	IPS	6.70	33.07	02-EBS-2204038
30'	IPS	14'	IPS	6.70	33.07	02-EBS-2204377
30'	IPS	16'	IPS	8.46	92.60	02-EBS-2204378

All dimensions are approximated and listed in inches



SDR 17 ELECTROFUSION LARGE BRANCH SADDLES

30'	IPS	18'	IPS	8.46	92.60	02-EBS-2204379
30'	IPS	20'	IPS	8.46	92.60	02-EBS-2204380

All dimensions are approximated and listed in inches

SDR 17 ELECTROFUSION LARGE BRANCH SADDLES

Water - 160 PSI at 73 Deg F Sustainable Maximum Operating Pressure

Gas - 90 PSI at 73 Deg F Sustainable Maximum Operating Pressure

- Suitable for *WATER*, Fluids & Slurries
- Engineered for PE3408, PE4710 & PE100 HDPE Pipe Systems

Manufactured in accordance with ASTM F-714, ASTM F-1055, ASTM D-2513, ASTM D-3035, ASTM D-3261, ASTM D-3350, AWWA C-901, AWWA C-906, DIN 16963, EN 1555, EN 12201, and ISO-9001 Certified

Base (D)	Base Norm	Outlet (d)	Outlet Norm	L	Unit Weight in lbs	Part Number
32'	IPS	10'	IPS	6.70	18.74	02-EBS-2204381
32'	IPS	12'	IPS	6.70	33.07	02-EBS-2204784
32'	IPS	14'	IPS	6.70	33.07	02-EBS-2204382
32'	IPS	16'	IPS	8.46	92.60	02-EBS-2204383
32'	IPS	18'	IPS	8.46	92.60	02-EBS-2204384
32'	IPS	20'	IPS	8.46	92.60	02-EBS-2204004
36'	IPS	10'	IPS	6.70	18.74	02-EBS-2204385
36'	IPS	12'	IPS	6.70	33.07	02-EBS-2204044
36'	IPS	14'	IPS	6.70	33.07	02-EBS-2204386
36'	IPS	16'	IPS	8.46	92.60	02-EBS-2204387
36'	IPS	18'	IPS	8.46	92.60	02-EBS-2204388
36'	IPS	20'	IPS	8.46	92.60	02-EBS-2204389
42'	IPS	10'	IPS	6.70	18.74	02-EBS-1812111
42'	IPS	12'	IPS	6.70	33.07	02-EBS-2204764
42'	IPS	14'	IPS	6.70	33.07	02-EBS-2204390
42'	IPS	16'	IPS	8.46	92.60	02-EBS-2204391
42'	IPS	18'	IPS	8.46	92.60	02-EBS-2204392
42'	IPS	20'	IPS	8.46	92.60	02-EBS-2204393
48'	IPS	10'	IPS	6.70	18.74	02-EBS-2204786
48'	IPS	12'	IPS	6.70	33.07	02-EBS-2204045
48'	IPS	14'	IPS	6.70	33.07	02-EBS-2204394
48'	IPS	16'	IPS	8.46	92.60	02-EBS-2204395
48'	IPS	18'	IPS	8.46	92.60	02-EBS-1812124
48'	IPS	20'	IPS	8.46	92.60	02-EBS-2204396
54'	IPS	10'	IPS	6.70	18.74	02-EBS-2204046
54'	IPS	12'	IPS	6.70	33.07	02-EBS-2204397
54'	IPS	14'	IPS	6.70	33.07	02-EBS-2204398
54'	IPS	16'	IPS	8.46	92.60	02-EBS-2204399
54'	IPS	18'	IPS	8.46	92.60	02-EBS-2204400
54'	IPS	20'	IPS	8.46	92.60	02-EBS-2204401
63'	IPS	10'	IPS	6.70	18.74	02-EBS-2204402
63'	IPS	12'	IPS	6.70	33.07	02-EBS-2204403
63'	IPS	14'	IPS	6.70	33.07	02-EBS-2204404
63'	IPS	16'	IPS	8.46	92.60	02-EBS-2204405
63'	IPS	18'	IPS	8.46	92.60	02-EBS-2204406
63'	IPS	20'	IPS	8.46	92.60	02-EBS-2204407
12'	DIPS	10'	DIPS	6.70	18.74	02-EBS-2204417
14'	DIPS	10'	DIPS	6.70	18.74	02-EBS-2204016
14'	DIPS	12'	DIPS	6.70	33.07	02-EBS-2204418

All dimensions are approximated and listed in inches



SDR 17 ELECTROFUSION LARGE BRANCH SADDLES

16'	DIPS	10'	DIPS	6.70	18.74	02-EBS-2204023
16'	DIPS	12'	DIPS	6.70	33.07	02-EBS-2204021

All dimensions are approximated and listed in inches

SDR 17 ELECTROFUSION LARGE BRANCH SADDLES

Water - 160 PSI at 73 Deg F Sustainable Maximum Operating Pressure

Gas - 90 PSI at 73 Deg F Sustainable Maximum Operating Pressure

- Suitable for *WATER*, Fluids & Slurries
- Engineered for PE3408, PE4710 & PE100 HDPE Pipe Systems

Manufactured in accordance with ASTM F-714, ASTM F-1055, ASTM D-2513 ASTM D-3035, ASTM D-3261, ASTM D-3350, AWWA C-901, AWWA C-906, DIN 16963, EN 1555, EN 12201, and ISO-9001 Certified

Base (D)	Base Norm	Outlet (d)	Outlet Norm	L	Unit Weight in lbs	Part Number
18'	DIPS	10'	DIPS	6.70	18.74	02-EBS-2204419
18'	DIPS	12'	DIPS	6.70	33.07	02-EBS-2204420
20'	DIPS	10'	DIPS	6.70	18.74	02-EBS-2204421
20'	DIPS	12'	DIPS	6.70	33.07	02-EBS-2204030
20'	DIPS	14'	DIPS	8.46	92.60	02-EBS-2204422
20'	DIPS	16'	DIPS	8.46	92.60	02-EBS-2204423
24'	DIPS	10'	DIPS	6.70	18.74	02-EBS-2204424
24'	DIPS	12'	DIPS	6.70	33.07	02-EBS-2204034
24'	DIPS	14'	DIPS	8.46	92.60	02-EBS-2204425
24'	DIPS	16'	DIPS	8.46	92.60	02-EBS-2204426
24'	DIPS	18'	DIPS	8.46	92.60	02-EBS-2204427
30'	DIPS	10'	DIPS	6.70	18.74	02-EBS-2204428
30'	DIPS	12'	DIPS	6.70	33.07	02-EBS-2204429
30'	DIPS	14'	DIPS	8.46	92.60	02-EBS-2204430
30'	DIPS	16'	DIPS	8.46	92.60	02-EBS-2204431
30'	DIPS	18'	DIPS	8.46	92.60	02-EBS-2204432
36'	DIPS	10'	DIPS	6.70	18.74	02-EBS-2204433
36'	DIPS	12'	DIPS	6.70	33.07	02-EBS-2204434
36'	DIPS	14'	DIPS	8.46	92.60	02-EBS-2204435
36'	DIPS	16'	DIPS	8.46	92.60	02-EBS-2204436
36'	DIPS	18'	DIPS	8.46	92.60	02-EBS-2204437
42'	DIPS	10'	DIPS	6.70	18.74	02-EBS-2204438
42'	DIPS	12'	DIPS	6.70	33.07	02-EBS-2204439
42'	DIPS	14'	DIPS	8.46	92.60	02-EBS-2204440
42'	DIPS	16'	DIPS	8.46	92.60	02-EBS-2204441
42'	DIPS	18'	DIPS	8.46	92.60	02-EBS-2204442
48'	DIPS	10'	DIPS	6.70	18.74	02-EBS-2204443
48'	DIPS	12'	DIPS	6.70	33.07	02-EBS-2204444
48'	DIPS	14'	DIPS	8.46	92.60	02-EBS-2204445
48'	DIPS	16'	DIPS	8.46	92.60	02-EBS-2204446
48'	DIPS	18'	DIPS	8.46	92.60	02-EBS-2204447

All dimensions are approximated and listed in inches

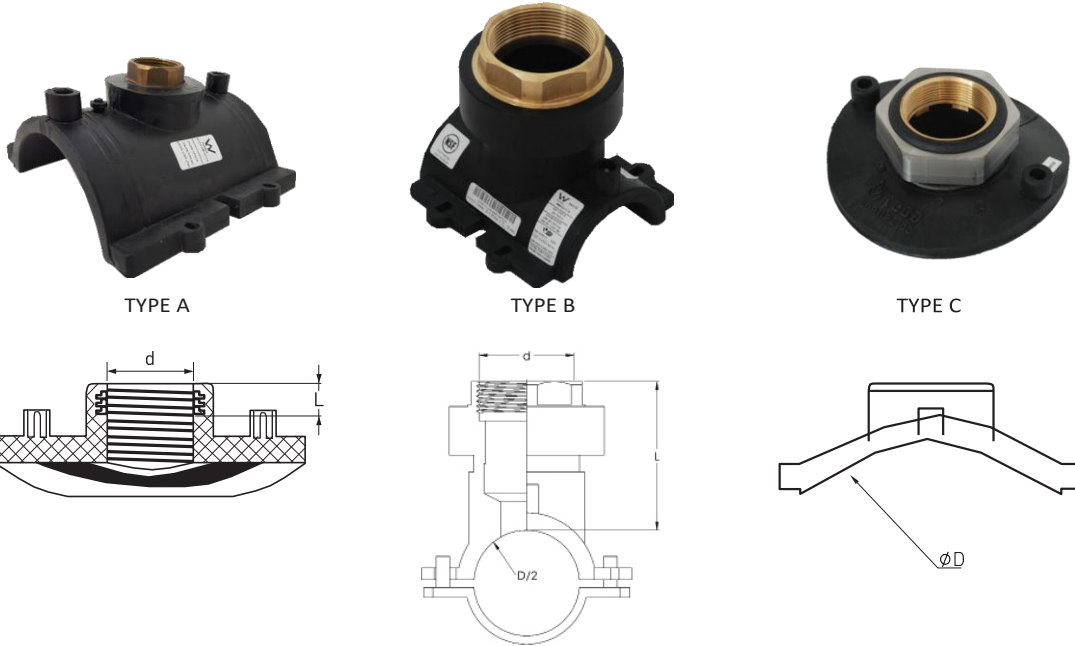
SDR 11 BRASS THREADED OUTLET ELECTROFUSION SADDLES

Water - 240 PSI at 73 Deg F Sustainable Maximum Operating Pressure

Gas - 150 PSI at 73 Deg F Sustainable Maximum Operating Pressure

- Suitable for *WATER*, Fluids & Slurries
- Engineered for PE3408, PE4710 & PE100 HDPE Pipe Systems

Manufactured in accordance with ASTM F-714, ASTM F-1055, ASTM D-2513, ASTM D-3035, ASTM D-3261, ASTM D-3350, AWWA C-901, AWWA C-906, DIN 16963, EN 1555, EN 12201, and ISO-9001 Certified



Base (D)	Outlet (d)	Unit Weight in lbs.	Type	Part Number
2"	3/4"	1.61	B	02-ECS-2204364
3"	3/4"	1.43	A	02-ECS-2204365
4"	3/4"	1.57	A	02-ECS-2204366
6"	3/4"	2.05	A	02-ECS-2204367
8"	3/4"	2.05	A	02-ECS-2204368
10"	3/4"	1.39	C	02-ECS-2204369
12"	3/4"	1.37	C	02-ECS-2204370
14"	3/4"	1.37	C	02-ECS-2204371
16"	3/4"	1.37	C	02-ECS-2204372
18"	3/4"	1.34	C	02-ECS-2204373
20"	3/4"	1.34	C	02-ECS-2204374
22"	3/4"	1.34	C	02-ECS-2204375
24"	3/4"	1.32	C	02-ECS-2204376
26"	3/4"	1.32	C	02-ECS-2204378
28"	3/4"	1.32	C	02-ECS-2204378
2"	1"	1.65	B	02-ECS-2204379
3"	1"	1.48	A	02-ECS-2204380

All dimensions are approximated and listed in inches



SDR 11 BRASS THREADED OUTLET ELECTROFUSION SADDLES

4"	1"	1.61	A	02-ECS-2204381
6"	1"	2.09	A	02-ECS-2204382

All dimensions are approximated and listed in inches

SDR 11 BRASS THREADED OUTLET ELECTROFUSION SADDLES

Water - 240 PSI at 73 Deg F Sustainable Maximum Operating Pressure

Gas - 150 PSI at 73 Deg F Sustainable Maximum Operating Pressure

- Suitable for *WATER*, Fluids & Slurries
- Engineered for PE3408, PE4710 & PE100 HDPE Pipe Systems

Manufactured in accordance with ASTM F-714, ASTM F-1055, ASTM D-2513, ASTM D-3035, ASTM D-3261, ASTM D-3350, AWWA C-901, AWWA C-906, DIN 16963, EN 1555, EN 12201, and ISO-9001 Certified

Base (D)	Outlet (d)	Unit Weight in lbs.	Type	Part Number
2"	3/4"	1.61	B	02-ECS-2204364
3"	3/4"	1.43	A	02-ECS-2204365
4"	3/4"	1.57	A	02-ECS-2204366
6"	3/4"	2.05	A	02-ECS-2204367
8"	3/4"	2.05	A	02-ECS-2204368
10"	3/4"	1.39	C	02-ECS-2204369
12"	3/4"	1.37	C	02-ECS-2204370
14"	3/4"	1.37	C	02-ECS-2204371
16"	3/4"	1.37	C	02-ECS-2204372
18"	3/4"	1.34	C	02-ECS-2204373
20"	3/4"	1.34	C	02-ECS-2204374
22"	3/4"	1.34	C	02-ECS-2204375
24"	3/4"	1.32	C	02-ECS-2204376
26"	3/4"	1.32	C	02-ECS-2204378
28"	3/4"	1.32	C	02-ECS-2204378
2"	1"	1.65	B	02-ECS-2204379
3"	1"	1.48	A	02-ECS-2204380
4"	1"	1.61	A	02-ECS-2204381
6"	1"	2.09	A	02-ECS-2204382
8"	1"	2.09	A	02-ECS-2204383
10"	1"	1.41	C	02-ECS-2204384
12"	1"	1.39	C	02-ECS-2204385
14"	1"	1.39	C	02-ECS-2204386
16"	1"	1.39	C	02-ECS-2204387
18"	1"	1.37	C	02-ECS-2204388
20"	1"	1.37	C	02-ECS-2204389
22"	1"	1.37	C	02-EBS-2204390
24"	1"	1.34	C	02-EBS-2204391
26"	1"	1.34	C	02-EBS-2204392
28"	1"	1.34	C	02-EBS-2204393
2"	2"	0.99	B	02-EBS-2204281
3"	2"	1.32	B	02-EBS-2204282
4"	2"	1.76	B	02-EBS-2204283
6"	2"	2.20	B	02-EBS-2204284
8"	2"	2.65	B	02-EBS-2204285
10"	2"	1.70	C	02-EBS-2204286
12"	2"	1.68	C	02-EBS-2204287
14"	2"	1.68	C	02-EBS-2204343
16"	2"	1.68	C	02-EBS-2204344

All dimensions are approximated and listed in inches



SDR 11 BRASS THREADED OUTLET ELECTROFUSION SADDLES

18"	2"	1.65	C	02-EBS-2204345
-----	----	------	---	----------------

All dimensions are approximated and listed in inches

SDR 11 BRASS THREADED OUTLET ELECTROFUSION SADDLES

Water - 240 PSI at 73 Deg F Sustainable Maximum Operating Pressure

Gas - 150 PSI at 73 Deg F Sustainable Maximum Operating Pressure

- Suitable for *WATER*, Fluids & Slurries
- Engineered for PE3408, PE4710 & PE100 HDPE Pipe Systems

Manufactured in accordance with ASTM F-714, ASTM F-1055, ASTM D-2513, ASTM D-3035, ASTM D-3261, ASTM D-3350, AWWA C-901, AWWA C-906, DIN 16963, EN 1555, EN 12201, and ISO-9001 Certified

Base (D)	Outlet (d)	Unit Weight in lbs.	Type	Part Number
20"	2"	1.65	C	02-EBS-2204346
22"	2"	1.65	C	02-EBS-2204405
24"	2"	1.63	C	02-EBS-2204741
26"	2"	1.63	C	02-EBS-2204407
28"	2"	1.63	C	02-EBS-2204408

All dimensions are approximated and listed in inches

SDR 11 ELECTROFUSION EQUAL TEES

Water - 240 PSI at 73 Deg F Sustainable Maximum Operating Pressure

Gas - 150 PSI at 73 Deg F Sustainable Maximum Operating Pressure

- Suitable for *WATER*, Fluids & Slurries
- Engineered for PE3408, PE4710 & PE100 HDPE Pipe Systems

Manufactured in accordance with ASTM F-714, ASTM F-1055, ASTM D-2513, ASTM D-3035, ASTM D-3261, ASTM D-3350, AWWA C-901, AWWA C-906, DIN 16963, EN 1555, EN 12201, and ISO-9001 Certified



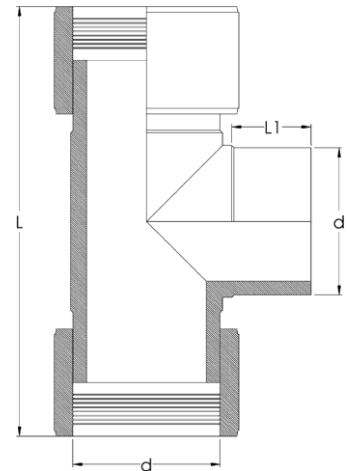
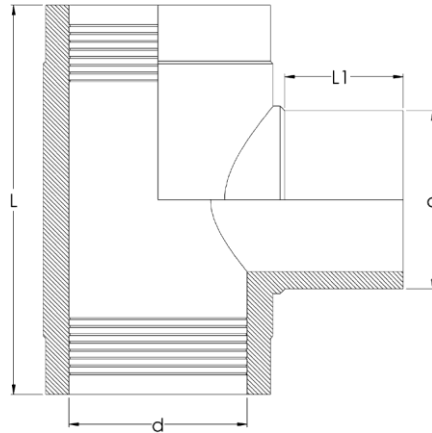
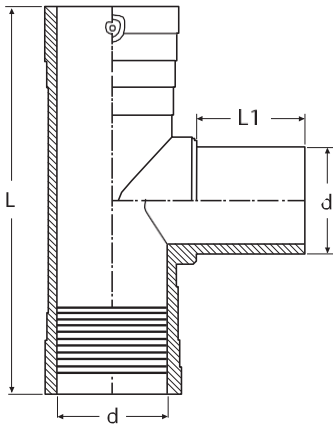
TYPE A



TYPE B



TYPE C



Nominal Pipe Size d	Base Norm	L	L1	Unit Weight in lbs.	Type	Part Number
3/4"	IPS	4.25	1.46	1.59	A	02-EET-2207004
1"	CTS	5.04	1.61	0.29	A	02-EET-2207005
1"	IPS	5.04	1.61	0.29	A	02-EET-2207006
1 1/4"	IPS	6.38	1.93	0.37	A	02-EET-2207007
1 1/2"	IPS	6.38	1.93	0.68	A	02-EET-2207008
2"	IPS	7.32	2.40	1.26	A	02-EET-2207010
3"	IPS	10.04	2.91	3.26	A	02-EET-2207011
4"	IPS	11.93	3.11	5.86	A	02-EET-2207013
6"	IPS	19.00	4.75	11.46	B	02-EET-2207016
8"	IPS	19.00	5.20	36.15	C	02-EET-2207015

All dimensions are approximated and listed in inches

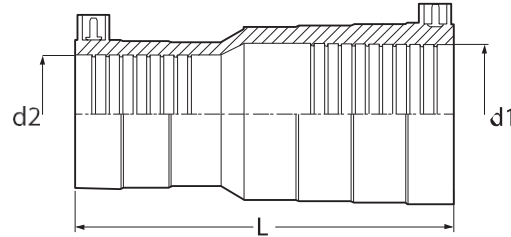
SDR 11 ELECTROFUSION REDUCERS

Water - 240 PSI at 73 Deg F Sustainable Maximum Operating Pressure

Gas - 150 PSI at 73 Deg F Sustainable Maximum Operating Pressure

- Suitable for *WATER*, Fluids & Slurries
- Engineered for PE3408, PE4710 & PE100 HDPE Pipe Systems

Manufactured in accordance with ASTM F-714, ASTM F-1055, ASTM D-2513, ASTM D-3035, ASTM D-3261, ASTM D-3350, AWWA C-901, AWWA C-906, DIN 16963, EN 1555, EN 12201, and ISO-9001 Certified



Nominal Pipe Size	L	Unit Weight in lbs.	Part Number
1" IPS X 1/2" IPS	3.54	0.09	02-EFR-2208008
1" IPS X 3/4" CTS	3.54	0.11	02-EFR-2208035
1" IPS X 3/4" IPS	3.54	0.09	02-EFR-2208010
1 1/4" IPS X 1" IPS	4.61	0.20	02-EFR-2208012
1 1/2" IPS X 1" IPS	5.16	0.33	02-EFR-2208014
2" IPS X 1" IPS	5.59	0.49	02-EFR-2208019
2" IPS X 1 1/4" IPS	5.47	0.53	02-EFR-2208020
2" IPS X 1 1/2" IPS	5.98	0.57	02-EFR-2208020
3" IPS X 2" IPS	7.48	1.28	02-EFR-2208023
4" IPS X 2" IPS	8.23	1.94	02-EFR-2208024
4" IPS X 3" IPS	8.46	2.40	02-EFR-2208025

All dimensions are approximated and listed in inches

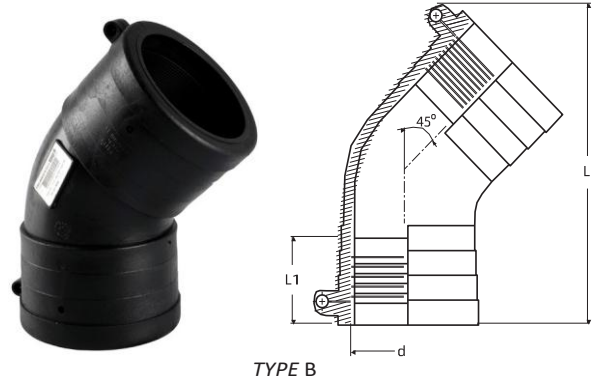
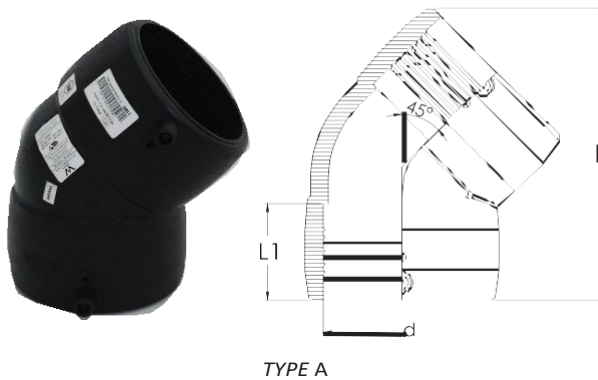
SDR 11 ELECTROFUSION 45 DEGREE ELBOWS

Water - 240 PSI at 73 Deg F Sustainable Maximum Operating Pressure

Gas - 150 PSI at 73 Deg F Sustainable Maximum Operating Pressure

- Suitable for *WATER*, Fluids & Slurries
- Engineered for PE3408, PE4710 & PE100 HDPE Pipe Systems

Manufactured in accordance with ASTM F-714, ASTM F-1055, ASTM D-2513, ASTM D-3035, ASTM D-3261, ASTM D-3350, AWWA C-901, AWWA C-906, DIN 16963, EN 1555, EN 12201, and ISO-9001 Certified



Nominal Pipe Size d	Base Norm	L	L1	Unit Weight in lbs.	Type	Part Number
3/4"	IPS	4.17	1.50	0.13	A	02-EFE-2209011
1"	CTS	4.57	1.61	0.18	A	02-EFE-2209012
1"	IPS	4.57	1.61	0.18	A	02-EFE-2209013
1 1/4"	IPS	5.47	1.85	0.29	A	02-EFE-2209014
1 1/2"	IPS	6.54	2.01	0.51	A	02-EFE-2209015
2"	IPS	7.76	2.28	0.88	A	02-EFE-2209016
3"	IPS	9.53	2.83	2.07	A	02-EFE-2209017
4"	IPS	11.89	3.23	5.71	A	02-EFE-2209018
6"	IPS	17.14	4.75	4.00	B	02-EFE-2209020

All dimensions are approximated and listed in inches

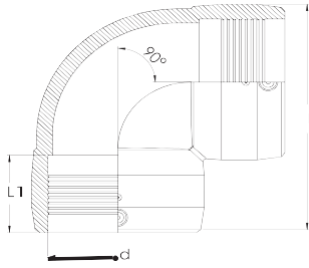
SDR 11 ELECTROFUSION 90 DEGREE ELBOWS

Water - 240 PSI at 73 Deg F Sustainable Maximum Operating Pressure

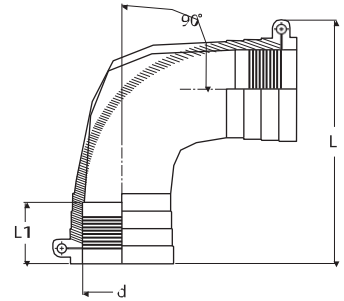
Gas - 150 PSI at 73 Deg F Sustainable Maximum Operating Pressure

- Suitable for *WATER*, Fluids & Slurries
- Engineered for PE3408, PE4710 & PE100 HDPE Pipe Systems

Manufactured in accordance with ASTM F-714, ASTM F-1055, ASTM D-2513, ASTM D-3035, ASTM D-3261, ASTM D-3350, AWWA C-901, AWWA C-906, DIN 16963, EN 1555, EN 12201, and ISO-9001 Certified



TYPE A

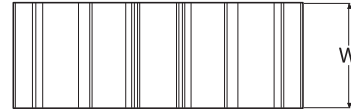
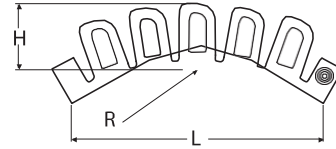


TYPE B

Nominal Pipe Size d	Base Norm	L	L1	Unit Weight in lbs.	Type	Part Number
3/4"	IPS	3.86	1.50	0.15	A	02-EFX-2209000
1"	CTS	4.29	1.61	0.31	A	02-EFX-2209002
1"	IPS	4.29	1.61	0.22	A	02-EFX-2209003
1 1/4"	IPS	5.16	1.85	0.37	A	02-EFX-2209004
1 1/2"	IPS	6.10	2.01	0.62	A	02-EFX-2209005
2"	IPS	7.44	1.89	1.15	A	02-EFX-2209006
3"	IPS	9.53	2.76	2.45	A	02-EFX-2209007
4"	IPS	11.69	3.23	6.61	A	02-EFX-2209008
6"	IPS	17.14	4.75	5.50	B	02-EFX-2209009

All dimensions are approximated and listed in inches

EF FLEX RESTRAINT PE100



Main Pipe Size	L	H	W	Part Number
6" - 54"	152	40	63	02-EFL-1825008

All dimensions are approximated and listed in inches

ENGINEERED PIPE GROUP

17 WURTZ AVE.

SASKATOON, SK. S7K 3J4

CANADA

T: (306) 931-2900

E: hdpesales@hdpe.ca

W: www.hdpe.ca



STRONGBRIDGE

To learn more about how EPG and Strongbridge can help, contact us by phone, email or visit our website to check out our products and services.



Strongbridge International LLC

Jacksonville, FL

T: (904) 278-7499

F: (904) 278-7501

E: contact@strongbridge.us

www.strongbridge.us

Strongbridge International LLC is not responsible for error or omissions in the content of this document. The information in this document is for reference purposes only and is not to be relied upon or substitute engineering documentation. All information is provided "as is", with no guarantee of completeness or accuracy and is subject to change without notice.